



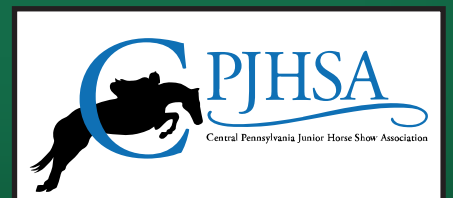
  
*Swan Lake*  
HORSE SHOWS™

## *Swan Lake Stables*

### *Spring/Summer Local Series*



Saturday April 6, 2024  
Saturday May 4, 2024  
Saturday June 8, 2024  
Saturday July 13, 2024  
Saturday August 10, 2024  
Saturday September 7, 2024



# Swan Lake Spring/Summer Local Series Judges

## April 6, 2024

Bradley Caine	Main Hunter Judge
Carol Kessel	Bridge Ring
Marek Leufkens	Jumper Judge

## May 4, 2024

Lara McPherson	Main Hunter Judge
Melissa Hawkins-Castillo	Bridge Ring
Marek Leufkens	Jumper Judge

## June 8, 2024

Shane Ledyard	Main Hunter Judge
Lyndi Prettyman-Caruso	Bridge Ring
Marek Leufkens	Jumper Judge

## July 13, 2024

Erika Kurtz	Hunter Judge
Cindy Newberry	Bridge Ring
Marek Leufkens	Jumper Judge

## August 10, 2024

Alexandra Panetta	Main Hunter Judge
Tasha Plunket	Bridge Ring
Marek Leufkens	Jumper Judge

## September 7, 2024

Dale Crittenberger	Hunter Judge
Elizabeth Haines	Derby Judge
Heather Achen	Bridge Ring
Marek Leufkens	Jumper Judge

## Swan Lake Horse Shows

**Show Manager:**  
Mary Bast

**Course Designer:**  
Mary Bast

**Vet (On Call):**  
Hess Equine  
(717) 993-5728

**Farrier (On Call):**  
Bryon Stem  
(717) 858-7341



# Rules and Regulations

381 Flatbush Rd Littlestown, PA 17340

Office day of show: (717) 873-1222 | Email: Shows@SwanLakeStables.com

## GENERAL INFORMATION

1. Management, the Committee, and/or Swan Lake Stables will not be responsible for any accident which may occur to any exhibitor, owner, attendant, horse or equipment at the show.
2. **Warning** - In accordance with PA Act #93 of 2005 you assume the risk of Equine Activities Pursuant to Pennsylvania Law.
3. ASTM/SEI approved helmets must be worn at all times while mounted on the show grounds. Harness is required when jumping for all competitors.
4. All exhibitors must appear in proper show attire.
5. The State of Pennsylvania requires that all horses and ponies must be in possession of a current negative Coggins Certificate taken within 12 months. Bring Coggins Certificate to the secretary.
6. Please use designated parking areas. You will be asked to move your vehicle if it is parked in the No Parking areas. There is no driving on the show grounds.
7. All Dogs must be on a leash when on the property.
8. A fee of \$75.00 will be charged for all returned checks first offense. \$100 for second returned checks. \$200 for all recurrent offenses

## CLASS CONDUCT

1. Three entries unless otherwise noted are required to be a complete class. Management reserves the right to cancel any class if the required entries have not been received, and to combine any division if necessary, to change an obstacle or alter any course. California splits will be used for any class over 20 entries.
2. NO person will be allowed in the ring at any time unless invited in by the management.
3. Eight ribbons will be awarded in all classes, unless otherwise stated.
4. Champion and reserve champion ribbons will be awarded in all divisions with 3 classes (must include an under saddle in the hunter divisions).

## SCHOOLING

Schooling over fences is available in the hunter show rings the morning of the show for a fee of \$15.00. Schooling in the show ring on the flat is available at no charge. Schooling in the designated schooling areas during the show is also at no charge.

Schooling the day before the show is available for a fee of \$30.00. Schooling is also available on non-event days year-round at Swan Lake. Contact info@swanlake-stables.com for more information or to schedule your schooling session!

## STABLING

Stalls are permanent with doors.

Stalls are \$75 for the weekend, and are on a first come first served basis.

Hay and shavings are available for purchase.

## NON-SHOWING HORSES

Every horse on grounds must be entered in the office whether showing or not and must present negative coggins. Any horse that is at the show but not entered in classes will be charged the Non-Show Fee of \$25.00/per horse in addition to the office fee and schooling fee if applicable.

## SERIES CONDUCT

1. We offer champion and reserve champion series awards in every division
2. For horse show purposes, the age of an exhibitor will be considered as of the first day of the schooling series and remain the same throughout.
3. Rider and horse must show in a minimum of two shows and be present at the September Finale to qualify for series end awards.

## ENTRIES

**Entries must be received the day before showing. Entries received the day of showing will be charged a \$50 late fee.**

**ONLINE ENTRIES ONLY.** www.horseshowsonline.com Entries must be filled out **completely** including all classes and divisions entered, signatures, ID numbers, and organization or membership numbers before numbers will be issued. Exhibitors are responsible for their own errors and those of their agents in preparation of their entry forms. You may enter for free on www.horseshowsonline.com

**AN OPEN CHECK OR CREDIT CARD, VALID COGGINS TEST, PROOF OF EHV-1 VACCINATION AND ALL APPLICABLE MEMBERSHIP ARE REQUIRED TO BE PRESENTED TO THE OFFICE BEFORE NUMBERS CAN BE PICKED UP.**

An office fee of \$40 will be assessed all entries. All accounts must be settled within 60 days of the end of the competition. A processing fee of \$100 plus collection fees will be charged for all non negotiable checks.

## AWARDS & PRIZE MONEY

Eight ribbons, unless otherwise stated, will be presented in all classes. Champion and Reserve will be awarded in all divisions containing three or more classes with three or more competitors that run to completion. In the Hunter ring, this must include the Under Saddle class if applicable.

Prize money is indicated for each class. Prize money won can be paid by check or deducted from each horse's account. An

IRS W-9 form must be completed in full before any prize money will be paid. Prize money will be withheld if the recipient's Social Security number or EIN number is not on file. Prize money will be payable to the owner unless written authorization, and complete

Three entries, unless otherwise stated, are necessary to fill a class, or the class may be canceled.

## DIRECTIONS TO SWAN LAKE

**From Frederick on Route 15 traveling North** - Take the Route 116 Exit (Hanover St.) - Bear right off exit. Go 4 miles to Bonneauville, after curve take immediate right onto Maple Street. Take first left onto White Hall Rd. Go 2.5 miles, see sign on left - Junque Shop, take left onto Honda Road. Make immediate right onto Schoolhouse Road. Swan Lake is 3/4 mile on the left.

**From Harrisburg on Route 15 traveling South** - Take the Route 116 Exit (Hanover St.) - Go left off exit. Go 4 miles to Bonneauville, after curve take immediate right onto Maple Street. Stay left at fork (Maple becomes White Hall). Go 2.5 miles, see sign on left - Honda Acres, take left onto Honda Road. Make immediate right onto Schoolhouse Road. Swan Lake is 3/4 mile on left.

**From Westminster on Route 97 North** - Go past McDonald's in Littlestown and Turn right at the Royal Farms onto Whitehall Rd. Go 1 mile, turn right onto Littlestown Road. Take second left onto Flatbush Road. Swan Lake is 1 mile on right.

## Swan Lake Horse Shows Price List

Item	Cost
Office, EMT, Grounds Fee <i>(Charged to all entries)</i>	\$40
Most Class Fees	\$20
Post-Entry Fee (Enter day of show, after the show starts)	\$50
Night/Weekend Stall	\$75
Day Stall	\$50
Shavings	Market Price
Hay	Market Price
Weekend Camper Spaces	\$100
Schooling over fences the morning of the show	\$15
Schooling the day before the show	\$30
Non-Showing Horse	\$25

## Gettysburg Area Lodgings

Wyndham Gettysburg		(717) 339-0020
Courtyard Marriott		(717) 334-5600
Country Inn and Suites		(717) 337-9518
Hampton Inn		(717) 338-9121
1863 Inn of Gettysburg		(717) 334-6211
Quality Inn and Suites		(717) 337-2400

## Hanover Area Lodgings

Holiday Inn Express	(717) 637-1228
Super 8 Hanover	(717) 630-8888
Hampton Inn Hanover	(717) 633-1117

# Spring/Summer Local Time Schedule

Main Hunter Ring 8:00 a.m.		Bridge Ring 8:15 a.m.		Grand Prix Ring 8:00 a.m.	
800	Blue/Red (all day)	1-2a	*Leadline		
27-29	Training Hunter (PRO and jr/am) 2'3" O/F	3-5	Walk Trot Hunter	109	1.05m Jumper 2.2.b
30	Training Hunter PRO 2'3" U/S	7-9	Walk Trot Canter Hunter	110	1.05m Jumper 2.1
30a.	Training Hunter jr/am 2'3" U/S	11-14	Short Stirrup Equitation	111	1.10m Jumper 2.2.b
43-45	Low Hunter 2'6" O/F	15-18	Long Stirrup Equitation	112	1.10m Jumper 2.1
83-85	Low TB Hunter 2'6" O/F	79-82	*Pleasure Horse/Pony	113	1.20m-1.40m Jumper 2.2.b
46	Low Hunter 2'6" U/S	19-21	Crossrail Hunter O/F	114	1.20m-1.40m Jumper 2.1
86	Low TB Hunter U/S	22	Crossrail Hunter U/S		Drag and course walk
250	Swan Lake Child/Adult Medal 2'6"	23-25	Easy Does It Hunter 18" O/F	101	.70m Jumper 2.2.b
47-49	Low Children's Hunter 2'6" O/F	26	Easy Does it Hunter 18" U/S	102	.70m Jumper 2.1
50	Low Children's Hunter 2'6" U/S	39-41	Modified Hunter 2' O/F	103	.80m Jumper 2.2.b
71-73	Low Adult Hunter 2'6" O/F	42	Modified Hunter 2' U/S	104	.80m Jumper 2.1
74	Low Adult Hunter 2'6" U/S	35-37	Novice Equitation 2' O/F	105	.90m Jumper 2.2.b
55-57	Open Hunter 2'9" or 3' O/F	38	Novice Equitation 2' U/S	106	.90m Jumper 2.1
58	Open Hunter 2'9" or 3' U/S	31-33	Children's Hunter Pony 2'/2'3" O/F	107	1.0m Jumper 2.2.b
251	Swan Lake Ch/Ad Medal 3'	34	Children's Hunter Pony 2'/2'3" U/S	108	1.0m Jumper 2.1
59-61	Children Hunter 3' O/F			99	.60m Jumpers 2.2.b
62	Children Hunter 3' U/S			100	.60m Jumpers 2.1
75-77	Adult Hunter 3' O/F				
78	Adult Hunter 3' U/S				
67-69	*Performance Hunter 3'3" O/F				
70	*Performance Hunter 3'3" U/S				

*All Classes will count for USHJA Outreach except those marked with \**

*Classes will be run in order listed above. Management reserves the right to change tables.  
Classes of same height in jumper ring will be run open card*

We are proud to announce that the Swan Lake Local Summer Series is a participating series of the Colonial Classic!

The top 3 riders in the series for each division after the August local show will be invited to show at the Colonial Classic Local Champions Finals at the Harrisburg Farm Show Complex!



# Swan Lake Spring Summer Finale

September 7th

## Swan Lake Hunter Derbies

**Annex Ring**

(10 am start!)

All Hunter Derbies open to horses and ponies. Distances will not be adjusted. The Derbies will be a hunt-n-go format; the handy round is incorporated into the first round and will be indicated on the course board.

If there are less than 6 entries in any height section the sections will be combined. If two sections are combined, the combined class will run for \$500. If all three sections are combined the class will run for \$750.

Class Entry Fee: \$50

Class 600: \$300 Swan Lake 2' Hunter Derby

Class 601: \$300 Swan Lake 2'6" Hunter Derby

Class 602: \$300 Swan Lake 3' Hunter Derby

Class 603: \$300 Swan Lake 18" Hunter Derby

## Swan Lake Equitation Finals

**Main Hunter Ring**

Open to horses and ponies ridden by a junior or an amateur. Riders will show over a Medal type course, including two tests similar to USEF equitation tests 1-19. In September this class will be run as an equitation finals. In the finals the top 8 will come back for a flat phase and then the top four will be called back for additional testing.

Class 250: Swan Lake Child/Adult Medal - fences 2'6"

Class 251: Swan Lake Junior/Amateur Medal - fences 3'



# Hunter Specs

## Leadline

Entry Fee Division: \$18

Class: \$10

Open to riders 6 years of age and under. To be judged on manners and suitability of mount to rider 50% and equitation of rider 50%.

1. Leadline
2. Leadline
- 2a. Leadline Off-Lead

### Champion and Reserve

## Walk Trot Hunter

Entry Fee Division: \$50

Class: \$18

Designed for beginning horses, ponies and/or riders. To be judged on manners, performance, suitability to rider and soundness. Martingales prohibited in all flat classes. Horse/rider combination man not cross enter into any classes jumping more than 4 fences.

3. Walk Trot Hunter
4. Walk Trot Hunter
5. Walk Trot Hunter

### Champion and Reserve

## Walk Trot Canter Hunter

Entry Fee Division: \$50

Class: \$18

Designed for beginning horses, ponies and/or riders. To be judged on manners, performance, suitability to rider and soundness. Martingales prohibited in all flat classes. Horse/rider combination man not cross enter into any classes jumping 2'3" or higher.

7. Walk Trot Canter Hunter
8. Walk Trot Canter Hunter
9. Walk Trot Canter Hunter

### Champion and Reserve

## Short Stirrup Equitation

Entry Fee Division: \$65

Class: \$18

Open to riders 12 years of age and under. To be judged on manners and suitability of mount to rider 50% and equitation of rider 50%. Martingales prohibited in all flat classes.

11. Short Stirrup Walk Trot
12. Short Stirrup Walk Trot
13. Short Stirrup Walk Trot Canter
14. Short Stirrup Over Fences - To be shown over 4 cross rails.

### Champion and Reserve

## Long Stirrup Equitation

Entry Fee Division: \$65

Class: \$18

Open to riders 13 years of age and over. To be judged on manners and suitability of mount to rider 50% and equitation of rider 50%. Martingales prohibited in all flat classes.

15. Long Stirrup Walk Trot
16. Long Stirrup Walk Trot
17. Long Stirrup Walk Trot Canter
18. Long Stirrup Over Fences - To be shown over 4 cross rails.

### Champion and Reserve

## Pleasure Hunter Horse/Pony

Entry Fee Division: \$65

Class: \$18

To be judged on mount's suitability to give a pleasurable ride. Martingales prohibited in all flat classes. Horse/rider combination man not cross enter into any classes jumping higher than 2'.

79. Pleasure Hunter Horse/Pony Under Saddle
80. Pleasure Hunter Horse/Pony Under Saddle
81. Pleasure Hunter Horse/Pony Hack (may be asked to extend gates and jump 2 x-rails)
82. Pleasure Hunter Horse/Pony Over Fences (4 x-rails)

### Champion and Reserve

# Hunter Specs

## Blue/Red Warmup Hunter

**Entry Fee**      **Class: \$20**

Open all day. Can be done at any height.

800.    Blue/Red Warmup Hunter

## Crossrail Hunter

**Entry Fee**      **Division: \$70**                      **Class: \$20**

Open to all riders. To be judged on manners, performance, suitability and soundness. Fences are crossrails and will go twice around the outside. Trot or canter fences. Martingales prohibited in flat class.

- 19.    Crossrail Hunter Over Fences
- 20.    Crossrail Hunter Over Fences
- 21.    Crossrail Hunter Over Fences
- 22.    Crossrail Hunter Under Saddle

**Champion and Reserve**

## Easy Does It Hunter 18"

**Entry Fee**      **Division: \$70**                      **Class: \$20**

Open to all riders. To be judged on manners, performance, suitability and soundness. Fences 18" and will include a change of direction. To be shown over 8 fences at 18". Trot or canter fences. Trotting in corners is not to be penalized. Martingales prohibited in flat class.

- 23.    Easy Does It Hunter Over Fences
- 24.    Easy Does It Hunter Over Fences
- 25.    Easy Does It Hunter Over Fences
- 26.    Easy Does It Hunter Under Saddle (No more than 8 to canter at a time)

**Champion and Reserve**

## Children's Hunter Pony 2'/2'3"

**Entry Fee**      **Division: \$70**                      **Class: \$20**

Open to children who have not reached their 18th birthday as of December 1st. Ponies 14.2 hands and under. To be judged on manners, performance and suitability of pony to rider. Fences 2' Small/Medium, 2'3" Large. To be shown over 8 fences. Martingales prohibited in flat class.

- 31.    Children's Hunter Pony Over Fences
- 32.    Children's Hunter Pony Over Fences
- 33.    Children's Hunter Pony Over Fences
- 34.    Children's Hunter Pony Under Saddle

**Champion and Reserve**

## Modified Hunter 2'

**Entry Fee**      **Division: \$70**                      **Class: \$20**

Open to horses and ponies (ponies may be ridden by an adult). To be judged on manners, suitability and soundness. Fences 2'. No oxers or big boxes. To be shown over 8 fences. Trotting in corners is not to be penalized. Martingales prohibited in flat class.

- 39.    Modified Hunter Over Fences
- 40.    Modified Hunter Over Fences
- 41.    Modified Hunter Over Fences
- 42.    Modified Hunter Under Saddle

**Champion and Reserve**



# Hunter Specs

## Training Hunter 2'3" (Split Pro/am)

**Entry Fee**      **Division: \$70**      **Class: \$20**

Open to horses and ponies (ponies may be ridden by an adult). To be judged on manners, suitability and soundness. Fences 2'3". To be shown over 8 fences. Martingales prohibited in flat class. Sections to be run open card. Horses can enter both sections with different riders.

- 27. Training Hunter PRO Over Fences
- 27a. Training Hunter jr/am Over Fences
- 28. Training Hunter PRO Over Fences
- 28a. Training Hunter jr/am Over Fences
- 29. Training Hunter PRO Over Fences
- 29a. Training Hunter jr/am Over Fences
- 30. Training Hunter PRO Under Saddle
- 30a. Training Hunter jr/am Under Saddle

## Low Hunter 2'6"

**Entry Fee**      **Division: \$70**      **Class: \$20**

Open to horses and ponies (ponies may be ridden by an adult). To be judged on manners, suitability and soundness. Fences 2'6". To be shown over 8 fences. Martingales prohibited in flat class.

- 43. Low Hunter Over Fences
- 44. Low Hunter Over Fences
- 45. Low Hunter Over Fences
- 46. Low Hunter Under Saddle

## Low Thoroughbred Hunter 2'6"

**Entry Fee**      **Division: \$70**      **Class: \$20**

To be judged on manners, suitability and soundness. Fences 2'6" To be shown over 8 fences. Martingales prohibited in flat class.

- 83. Low TB Hunter Over Fences 2'6"
- 84. Low TB Hunter Over Fences 2'6"
- 85. Low TB Hunter Over Fences 2'6"
- 86. Low TB Hunter Under Saddle

**Champion and Reserve in all divisions**

## Low Children's/Adult Hunter 2'6"

**Entry Fee**      **Division: \$70**      **Class: \$20**

Open to horses ridden by a junior or adult amateur. To be judged on manners, suitability and soundness. Fences 2'6". To be shown over 8 fences. Martingales prohibited in flat class. Will be combined if less than 4 in either section.

- 47. Low Children's Hunter Over Fences
- 71. Low Adult Hunter Over Fences
- 48. Low Children's Hunter Over Fences
- 72. Adult Hunter Over Fences
- 49. Low Children's Hunter Over Fences
- 73. Low Adult Hunter Over Fences
- 50. Low Children's Hunter Under Saddle
- 74. Low Adult Hunter Under Saddle

# Hunter Specs

## Open Hunter 2'9"/3'

**Entry Fee**      **Division: \$70**      **Class: \$20**

To be judged on manners, suitability and soundness. Fences 2'9" or 3'. To be shown over 8 fences. Martingales prohibited in flat class.

- 55. Open Hunter Over Fences
- 56. Open Hunter Over Fences
- 57. Open Hunter Over Fences
- 58. Open Hunter Under Saddle

**Champion and Reserve in all divisions**

## Children's/Adult Hunter 3'

**Entry Fee**      **Division: \$70**      **Class: \$20**

Open to horses ridden by a junior or adult amateur. To be judged on manners, suitability and soundness. Fences 3'. To be shown over 8 fences. Martingales prohibited in flat class. Will be combined if less than 4 in either section.

- 59. Children's Hunter Over Fences
- 75. Adult Hunter Over Fences
- 60. Children's Hunter Over Fences
- 76. Adult Hunter Over Fences
- 61. Children's Hunter Over Fences
- 77. Adult Hunter Over Fences
- 62. Children's Hunter Under Saddle
- 78. Adult Hunter Under Saddle

**Champion and Reserve**

## Performance Hunter 3'3"

**Entry Fee**      **Division: \$70**      **Class: \$20**

Open to all. To be judged on manners, suitability and soundness. Fences 3'3". To be shown over 8 fences. Martingales prohibited in flat class.

- 67. Performance Hunter Over Fences
- 68. Performance Hunter Over Fences
- 69. Performance Hunter Over Fences
- 70. Performance Hunter Under Saddle

**Champion and Reserve**

# Equitation Specs

## Swan Lake Equitation Medals

Open to horses and ponies ridden by a junior or an adult amateur. Riders will show over a medal type course, including two tests similar to USEF equitation tests 1-19.

On September 7th this class will be run as an equitation final. In the finals, the top 8 will come back for a flat phase and then the top four will be called back for additional testing.

	<b>Entry Fee</b>
250. Swan Lake Child/Adult Medal - Fences 2'6"	\$20
251. Swan Lake Junior/Amateur Medal - Fences 3'	\$20

## Novice Equitation 2'

**Entry Fee**      **Division: \$70**      **Class: \$20**

To be judged on manners and suitability of mount to rider 50% and equitation of rider 50%. Fences 2'. To be shown over 8 fences. Martingales prohibited in flat class.

- 35. Novice Equitation 2' Over Fences
- 36. Novice Equitation 2' Over Fences
- 37. Novice Equitation 2' Over Fences
- 38. Novice Equitation 2' Under Saddle

**Champion and Reserve**

# Jumper Specs

## **Jumper .60m** Open to horses and ponies. Fences .60m NO OXERS NOR COMBINATIONS

### Entry Fee

99.	.60m Jumper - Table 2.2.b	\$20
100.	.60m Jumper - Table 2.2.b	\$20

## **Jumper .70m** Open to horses and ponies. Fences .70m with spreads .70m-.75m

### Entry Fee

101.	.70m Jumper - Table 2.2.b	\$20
102.	.70m Jumper - Table 2.2.b	\$20

## **Jumper .80m** Open to horses and ponies. Fences .80m with spreads .80m-.85m

### Entry Fee

103.	.80m Jumper - Table 2.1	\$20
104.	.80m Jumper - Table 2.2.b	\$20

## **Jumper .90m** Open to horses and ponies. Fences .90m with spreads .90m-.95m

### Entry Fee

105.	.90m Jumper - Table 2.1	\$20
106.	.90m Jumper - Table 2.2.b	\$20

## **Jumper 1.0m** Open to horses and ponies. Fences 1.0m with spreads 1.0m-1.05m

### Entry Fee

107.	1.0m Jumper - Table 2.1	\$20
108.	1.0m Jumper - Table 2.2.b	\$20

## **Jumper 1.05m** Open to horses and ponies. Fences 1.05m with spreads 1.05m-1.10m

### Entry Fee

109.	1.05m Jumper - Table 2.1	\$20
110.	1.05m Jumper - Table 2.2.b	\$20

## **Jumper 1.10m** Open to horses and ponies. Fences 1.10m with spreads 1.10m-1.15m

### Entry Fee

111.	1.10m Jumper - Table 2.1	\$20
112.	1.10m Jumper - Table 2.2.b	\$20

## **Jumper 1.20m-1.40m**

Open to horses and ponies. Fences 1.20m-1.40m with spreads 1.15m-1.20m (Rider must check in with in-gate before the start of the division to declare what hight they are jumping)

### Entry Fee

113.	1.20-1.40m Jumper - Table 2.1	\$20
114.	1.20-1.40m - Table 2.2.b	\$20

Become part of the Swan Lake Show Team!

# Swan Lake Stables

Offering Boarding, Training, Lessons, Sales, and Showing



## IEA Middle and High School Show Teams

Swan Lake Offers Premiere Full Care Boarding

- 12' x 12' matted stalls
- Heated grooming and wash area
- 350' x 120' Indoor area
- 10 outdoor riding rings
- Trails
- Group or private daily turn-out
- Lesson and Training packages available
- Lessons offered to ages 2 and up
- Show right on the property

Contact Mary Bast for more information:

[mary@swanlakestables.com](mailto:mary@swanlakestables.com)

Cell: 717-873-2080

[www.swanlakestables.com](http://www.swanlakestables.com)

# All New for 2024!

Same great divisions, new names.

Our Shows will be rated with CPHJSA and PHSA. Go to [www.cpjhsa.org](http://www.cpjhsa.org) and [www.pennhsa.org](http://www.pennhsa.org) to accrue points. Sign up for an outreach membership at [www.ushja.org](http://www.ushja.org) for Outreach points

## New and Improved!

### USHJA Outreach Rewards and Awards

Earn points towards year-end rewards and awards with a free USHJA Outreach Membership!

USHJA Outreach Competitions and Classes provide opportunity to earn national recognition in classes from walk/trot to 3'0" in hunter, equitation, and .60m-1.20m in jumper sections at rated and unrated local shows.

#### Rewards

Riders and owners of USHJA Outreach registered horses can earn level status and points to redeem at the end of the year for items such as USHJA logo wear, Outreach ribbons or Outreach medallions.

**Bronze Level:** Riders or horses must earn at least 50-74 points during the competition year

**Silver Level:** Riders or horses must earn at least 75-99 points during the competition year

**Gold Level:** Riders or horses must earn at least 100 points during the competition year

#### Awards

*New! Exciting year-end awards will be given to trainers, riders and horses.*

**Trainers**—Earn the USHJA Outreach High Point Trainer Award by being the leading trainer in your zone whose riders have earned 100 or more points cumulatively in USHJA Outreach Classes.

**Riders**— In addition to awards and rewards, one high point rider from each Zone will earn a Golden Backstage Pass to participate in the USHJA National Championship Affiliate sections and get exclusive access to free educational sessions and National Championship Grand Prix and Hunter Derby course walks!

**Horses**—While horse recording and microchipping is not required to participate in Outreach classes, owners wishing for their horses to earn points must have them recorded with USHJA (\$20/annual or \$75/lifetime). Horses will have their Outreach points tracked and ranked within their USHJA Zone and displayed on [ushja.org](http://ushja.org).

**For more information** and to find a USHJA Outreach Competition near you, visit [ushja.org/Outreach](http://ushja.org/Outreach).

**Questions?** Contact Melanie Mader at [mmader@ushja.org](mailto:mmader@ushja.org).



Need not be a member to attend, but only members will accrue points in their respective organizations.



USHJA Outreach Champion

# WAIVER AND RELEASE OF LIABILITY, ASSUMPTION OF RISK AND INDEMNITY AGREEMENT

For and in consideration of Swan Lake Stables allowing me, the undersigned, to participate in any capacity (including as a rider, driver, handler, lounge, lessee, owner, agent, coach, official, trainer or volunteer) in a Swan Lake Stables Horse Show; I, for myself, and on behalf of my spouse, children, heirs and next of kin, and any legal and personal representatives, executors, administrators, successors, and assigns, hereby agree to and make the following contractual representations pursuant to this Agreement (the "Agreement"):

A. **RULES AND REGULATIONS:** I hereby agree to be bound and abide by the rules, regulations, and policies of Swan Lake Stables.

B. **ACKNOWLEDGMENT OF RISK:** I knowingly, willingly, and voluntarily acknowledge the inherent risks associated with the sport of equestrian and know that horseback riding and related equestrian activities are inherently dangerous, and that participation in any Swan Lake Stables Event involves risks and dangers including, without limitation, the potential for serious bodily injury (including broken bones, head or neck injuries), sickness and disease (including communicable diseases), trauma, pain & suffering, permanent disability, paralysis and death; loss of or damage to personal property (including my mount & equipment) arising out of the unpredictable behavior of horses; exposure to extreme conditions and circumstances; accidents involving other participants, event staff, volunteers or spectators; contact or collision with other participants and horses, natural or man made objects; adverse weather conditions; facilities issues and premises conditions; failure of protective equipment (including helmets); inadequate safety measures; participants of varying skill levels; situations beyond the immediate control of the Event organizers and competition management; and other undefined, not readily foreseeable and presently unknown risks and dangers ("Risks").

**EQUINE ACTIVITY LIABILITY ACT WARNING:**

**CAUTION: HORSEBACK RIDING AND EQUINE ACTIVITIES CAN BE DANGEROUS. RIDE AT YOUR OWN RISK.**

**YOU ASSUME THE RISK OF EQUINE ACTIVITIES PURSUANT TO PENNSYLVANIA LAW.**

Under the laws of most States, an equine activity sponsor or equine professional is not liable for any injury to, or the death of, a participant in equine activities resulting from the inherent risks of equine activities.

C. **ASSUMPTION OF RISK:** I understand that the aforementioned Risks may be caused in whole or in part or result directly or indirectly from the negligence of my own actions or inactions, the actions or inactions of others participating in the Events, or the negligent acts or omissions of the Released Parties defined below, and I hereby voluntarily and knowingly assume all such Risks and responsibility for any damages, liabilities, losses, or expenses that I incur as a result of my participation in any Swan Lake Stables Events. I also agree to be responsible for any injury or damage caused by me, my horse, my employees or contractors under my direction and control at any Swan Lake Stables Event.

D. **WAIVER AND RELEASE OF LIABILITY, HOLD HARMLESS AND INDEMNITY:** In conjunction with my participation in any Swan Lake Stables Event, I hereby release, waive and covenant not to sue, and further agree to indemnify, defend and hold harmless the following parties: Swan Lake Stables, event participants (including athletes/riders, coaches, trainers, judges/officials, and other personnel), competition managers, the owners, managers, and all directors, officers, employees, agents, contractors, and volunteers of any of the aforementioned parties (Individually and Collectively, the "Released Parties" or "Event Organizers"), with respect to any liability, claim(s), demand(s), cause(s) of action, damage(s), loss, or expense (including court costs and reasonable attorney fees) of any kind or nature ("Liability") which may arise out of, result from, or relate in any way to my participation in the Events, including claims for Liability caused in whole or in part by the negligent acts or omissions of the Released Parties.

E. **COMPLETE AGREEMENT AND SEVERABILITY CLAUSE:** This Agreement represents the complete understanding between the parties regarding these issues and no oral representations, statements or inducements have been made apart from this Agreement. If any provision of this Agreement is held to be unlawful, void, or for any reason unenforceable, then that provision shall be deemed severable from this Agreement and shall not affect the validity and enforceability of any remaining provisions.

**I HAVE CAREFULLY READ THIS DOCUMENT IN ITS ENTIRETY, UNDERSTAND ALL OF ITS TERMS AND CONDITIONS, AND KNOW IT CONTAINS AN ASSUMPTION OF RISK, RELEASE AND WAIVER FROM LIABILITY, AS WELL AS A HOLD HARMLESS AND INDEMNIFICATION OBLIGATIONS.**

By signing below, I (as the participant or as the Parent/Legal Guardian of the minor identified below) hereby accept and agree to the terms and conditions of this Agreement in connection with my (or the minor's) participation in any USEF Event. If, despite this Agreement, I, or anyone on my behalf or the minor's behalf, makes a claim for Liability against any of the Released Parties, I will indemnify, defend and hold harmless each of the Released Parties from any such Liabilities as the result of such claim.

The parties agree that this agreement may be electronically signed. The parties agree that the electronic signatures appearing on this agreement are the same as handwritten signatures for the purposes of validity, enforceability, and admissibility.

**PARTICIPANT: RIDER/DRIVER/HANDLER/LONGEUR/OFFICIAL/STAFF/VOLUNTEER (mandatory)**

Signature: \_\_\_\_\_ Print Name: \_\_\_\_\_

**TRAINER (mandatory)**

Signature: \_\_\_\_\_ Print Name: \_\_\_\_\_

**OWNER (mandatory)**

Signature: \_\_\_\_\_ Print Name: \_\_\_\_\_

**COACH (if applicable)**

Signature: \_\_\_\_\_ Print Name: \_\_\_\_\_

Parent/Guardian Signature: (Required if Rider/Driver/Handler/Longeur is a minor) \_\_\_\_\_

Print Parent//Guardian Name: \_\_\_\_\_ Emergency Contact Phone No. \_\_\_\_\_

Protect the Skin You're In!

# EQUIVISOR<sup>®</sup>

Run, race, ride like the wind - it stays on



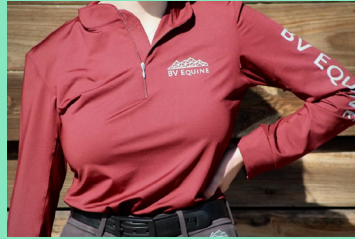
[EquiVisor.com](http://EquiVisor.com)

[WeCare@EquiVisor.com](mailto:WeCare@EquiVisor.com)





Charlotte Voghell  
founder of Bv Equine LLC



Sun Shirt



Dublin Knee  
Patch Breeches



# BV EQUINE

Phone: 770-864-2477

Website: [BvEquine.com](http://BvEquine.com)

Email: [Charlotte.voghell@bvequine.com](mailto:Charlotte.voghell@bvequine.com)

**Offering Kids, Mens and Womens in 20+ colors!!**



Trail Hoodie  
Sizes: S-5XL



Schooling Breeches



Scan QR code  
for easy  
access to  
the website.