



# *Quentin Fall Classic*

August 31 -September 3, 2017

USEF National Hunters and 3\* Jumpers

CPJHSA \* MHSA \* PHSA \* EPPHA \* NAL \* WIHS \* M&S \* TIP \* TAKE2

\$25,000 Grand Prix

\$5000 USHJA National Hunter Derby

\$3500 Show Jumping Hall of Fame Junior/AO Classic

USEF Talent Search 1\*      \$1500 Green Hunter Incentive

Lots of Hunter and Jumper Classics





# Quentin Fall Classic Officials and Staff

## Judges

Jimmy Clapperton | H/HE

Scott Snowdon | J

Andrea Wells | H/HE/J

Pat Byrne | J/H/HB (guest card)

Nancy Ashway | HB

## Course Designers

Nancy Wallis | Jumpers

Streett Moore | Hunters

## Stewards

Beverly Bedard

Faith Alicea

## Staff

### Swan Lake Stables LLC

#### General Manager:

Mary Bast

### Swan Lake Horse Shows

#### Show Manager:

Nancy Wallis

#### Stabling:

Jack Stedding Jr

Matt Shepard

#### Awards:

TD Hazen

#### Vet:

Hope Batchelor

(315) 368-8532

#### Hospitality:

Lindsay Kohr

#### Technical Coordinator:

#### Facility:

Don Winters

Kevin Daly

#### Secretary:

Meghan Garland

Jaime Baile

#### Farrier:

David Landolfi

(717) 226-3970

## Official Show Photographer

Hoof Print Images Photography







Photo by: Tom Parris

## *Dress Like a Champion*

***Only the best for the best.*** Dress your horse like a champion this season with Saratoga Horsework's premium line of made in the USA dress sheets and stable apparel. Choose from several fabric options, then customize your look with the various color, piping, ribbon, and embroidery selections available.



***Saratoga Horseworks, Ltd.***  
Custom Horse Clothing Since 1988

800.848.1914

[www.horseworks.com](http://www.horseworks.com)

[dani@horseworks.com](mailto:dani@horseworks.com)



# Rules and Regulations

381 Flatbush Rd Littlestown, PA 17340

Office: (717) 359-5357 | Email: Shows@SwanLakeStables.com

## GENERAL INFORMATION

EVERY CLASS OFFERED HEREIN WHICH IS COVERED BY THE RULES AND SPECIFICATIONS OF THE CURRENT USEF RULE BOOK WILL BE CONDUCTED AND JUDGED IN ACCORDANCE THEREWITH. All questions not covered in these rules and regulations shall be decided by the show management whose decision shall be final. Every horse entered for competition will comply with the rules of the horse show management, but management will, in no case, be responsible for any loss or damage that may occur, and it shall be condition of entry that each exhibitor shall hold this horse show and the officials and employees of the show blameless for any loss or accident to his horse, employees, equipment, which may occur from sickness, fire or otherwise.

The management reserves the right to refuse, accept conditionally, or to cancel any entries, disqualify any riders or exhibitors, prohibit entries and cancel award prizes without claims for damages; to cancel or combine unfilled classes, or to reschedule classes after due notice to exhibitors; to change rings or rotate judges.

Exhibitors are notified that any act of discourtesy or disobedience to the judges or officials, on the part of the owner, manager, rider, or groom shall disqualify the horse, and the owner shall forfeit his entry fee and other fees.

Show management reserves to itself the power to prohibit any person from attending or showing a horse in the ring and to remove any groom or horse from the show without being liable for compensation.

All exhibitors must wear protective headgear at all times while mounted on the show grounds.

All dogs must be on leashes and under owners control.

All Hunter and Equitation classes will receive ribbons through eighth place. All sections with three or more classes will receive champion and reserve Awards. Jumper Awards follow USEF JP110.

Sharps and Medical waste must be disposed of in sharps container available in the barns.

## SCHOOLING RULES

**Main Hunter Ring** - Schooling on the Flat in the morning until approx ½ hour prior to the start of the first class.

**Grand Prix Ring** - Schooling on the Flat until 1 hour prior to the start of the first class.

**Annex Ring** - Schooling on the Flat until 1 hour prior to the start of the first class on Thursday and Friday. Ticketed Schooling over fences Saturday and Sunday morning until ½ hour prior to the start of the first class.

**Bridge Ring** - Ticketed schooling over fences in the morning until ½ hour prior to the start of the first class.

## STABLING

Stalls are both permanent and tent stalls with doors. Stalls are \$205 per week and are on a first come first served basis. Single night stalls are available for \$95 and may be occupied after 5:00PM and must be vacated by 3:00PM the following day. All stall requests must be accompanied by a check or credit card and must be received by the close of entries to guarantee that we will have your stalls for you. **STALLS RECEIVED WITHOUT A CHECK or CC WILL NOT BE RESERVED.** There is a \$50 non-refundable deposit on each stall. All horses staying in stalls will be charged a stall fee. ONLY horses under the same ownership are able to share stalls. Feed and bedding are available from our feed office. Horses staying in stalls will not be charged a grounds fee.

**No Electric Golf Carts. All extension cords used in the tents must be a minimum of #14.**

## CAMPER SPACES

Camper spaces must be reserved on your entry or with the office (717) 359-5357. All campers \$275 Camper Fee per week, \$80 Night.

### Footring

**Grand Prix Ring** 250'x220'

**Main Hunter Ring** 275'x175'

**Dover Ring** 230'x150'

**Annex Ring** 290'x130'

**Indoor Ring** 240'x120'

**All footing is Sand and Fabric**

## ENTRIES

**Entries received after the close of entries August 21, 2017 will be charged a \$35 post entry fee.**

*NO PHONE, FAXED or EMAILED ENTRIES WILL BE ACCEPTED.* Entry forms must be filled out **completely and legibly** including all classes and divisions entered, signatures, ID numbers, and organization or membership numbers before numbers will be issued. Exhibitors are responsible for their own errors and those of their agents in preparation of their entry forms.

*AN OPEN CHECK OR CREDIT CARD, VALID COGGINS TEST, PROOF OF EHV-1 VACCINATION AND ALL APPLICABLE MEMBERSHIP AND MEASUREMENT CARDS ARE REQUIRED TO BE PRESENTED TO THE OFFICE **BEFORE** NUMBERS CAN BE PICKED UP.*

An office fee of \$40 will be assessed all entries. All accounts must be settled within 60 days of the end of the competition. A processing fee of \$100 plus collection fees will be charged for all non negotiable checks.

### **USEF Membership Statement**

*Life, senior active and junior active members shall be eligible to participate in all classes at Regular Competitions, Eventing Competitions at the Preliminary Level or above and Combined Driving Competitions at the Advanced Level, Dressage, Reining and Vaulting Competitions and Endurance Rides. A nonmember may participate as a handler, rider, driver, owner, lessee, agent, coach or trainer at Regular Competitions, Eventing Competitions, Dressage Competitions, Reining Competitions and*

*Combined Driving Competitions upon payment of a \$30 Show Pass fee. Participants in the following classes are exempted from the Requirements of this rule: 1) leadline; 2) exhibitions; 3) games and races; 4) classes for 4-H members; 5) walk trot and academy classes (academy classes are classes limited to horses used regularly in a lesson program); 6) USDF introductory level tests, pas de deux and quadrille classes; 7) NRHA Endorsed Reining Competitions. 8) Opportunity classes, 9) citizens of other nations who have proof, in English, of current membership in good standing of their own National Federation, 10) USEA beginner novice division; and 11) assistant handlers in Dressage Sport Horse Breeding classes.*

## SCRATCHES

Horses scratched before the closing date of entries will receive full repayment of fees minus a \$40 office fee. Also see "Stabling". Horses scratched after the closing date will be responsible for the office fee and a \$50 scratch fee.

## NON-SHOWING HORSES

All horses on the show grounds **must** be registered in the office and show negative coggins and proof of EHV 1/4. Non-showing horses with stalls will be charged a \$45 Non-Showing horse fee in addition to stall fees. Non-showing horses without stalls will be charged a \$45 Non-Showing fee

plus a grounds fee.

## AWARDS & PRIZE MONEY

Eight ribbons, unless otherwise stated, will be presented in all classes. Champion and Reserve will be awarded in all divisions containing three or more classes with three or more competitors that run to completion. In the Hunter ring, this must include the Under Saddle class if applicable.

Prize money will be credited to your bill. Please designate the payee along with mailing address and tax id on the entry blank. Prize money checks will be mailed within 30 days of the end of the competition.

Three entries, unless otherwise stated, are necessary to fill a class, or the class may be canceled.

## NOMINATING FEE

All horses showing in Level 5, 6, 7 and 8 Jumpers, Grand Prix and the Junior/Amateur Owner sections must be nominated and pay the nominating fee of \$150.00 by the closing date of entries. Horses not nominated before the closing date of entries will pay a late nominating fee of \$50 in addition to the nominating fee. Horses showing in jumper sections not requiring a nominating fee will pay the per class fee only and should enter their classes when submitting their entry blank or they must pay the post entry fee. Once a horse is nominated, the post entry fee is not refundable for any reason. Level 1, 2, 3 and 4, Adult Amateurs, Children's, Young Jumpers and Pony Jumpers will not have a nominating fee.

## ORDERS OF GO

All Classics in the Grand Prix Ring will have a posted order of go.

## MOTORIZED VEHICLE STATEMENT

*Minors who do not have a valid driver's license which allows them to operate a motorized vehicle in the state in which they reside will not be permitted to operate a motorized vehicle of any kind, including, but not limited to, golf carts, motorcycles, scooters, or farm utility vehicles, on the competition grounds of licensed competitions. Minors who have a valid temporary license may operate the above described motorized vehicles as long as they are accompanied by an adult with a valid driver's license. The parent(s), legal guardian(s), or individual who signs the entry blank as a parent or guardian of a minor operating a motorized vehicle in violation of this rule are solely responsible for any damages, claims, losses or actions resulting from that operation. Violations of this rule will be cause for sanctions against the parent(s), guardian(s) and/or trainer(s) who are responsible for the child committing the offense. Penalties may include exclusion of the child, parent(s), guardian(s), and/or trainer(s) from the competition grounds for the remainder of the competition and charges being filed against any of the above individuals in accordance with Chapter 6. Wheelchairs and other mobility assistance devices for individuals with disabilities are exempt from this rule.*

## Swan Lake Horse Shows National Show Price List

Item	Cost
Stall on or before 8/21	\$180
Stall after 8/21	\$205
Night Watch <i>(included with each stall)</i>	
Shavings	\$9 per bag
Hay	Market Price
Grain - We offer Purina Grain Products (Please pre-order in advance)	Market Price
Late Entry Fee <b>(Entries received after August 21, 2017)</b>	\$35
Late class add fee (All horses not entered by 5pm the previous day will receive one per class)	\$5
Office Fee <i>(Charged to all entries)</i>	\$40
Grounds Fee <i>(Charged to horses without stalls)</i>	\$30
Camper Space Per Week/Per Night	\$275/\$80
Camper Pump Out	\$60
Non-Showing Horse	\$45
Nomination Fee <i>(For nominated jumper sections)</i>	\$150

## Gettysburg Area Lodgings

Wyndham Gettysburg		(717) 339-0020	Ask for Swan Lake Rate
Courtyard Marriott		(717) 334-5600	Ask for Swan Lake Rate
Country Inn and Suites		(717) 337-9518	
Hampton Inn		(717) 338-9121	
1863 Inn of Gettysburg		(717) 334-6211	
Quality Inn and Suites		(717) 337-2400	

## Hanover Area Lodgings

Holiday Inn Express	(717) 637-1228
Super 8 Hanover	(717) 630-8888
Shepard Mansion	(717) 633-8075
Hampton Inn Hanover	(717) 633-1117





FOOTING • JUMPS • RUBBER PAVERS  
WATER JUMPS • WATER TRUCKS  
EURO SPRINKLERS • DRAGS  
ARENA EQUIPMENT

OFFICIAL GGT FOOTING DISTRIBUTOR MD/PA/VA  
**DJL EQUESTRIAN SERVICES**

540-219-4711 | [djljumps@aol.com](mailto:djljumps@aol.com) | [www.djljumps.com](http://www.djljumps.com)

# Quentin Fall Classic A-Rated Hunter Specs

## Green Conformation Hunter

Green Conformation fences to be at 3'6" and open only to horses in their first year of showing at 3'6".

All Conformation sections are to be judged 70% on performance, 30% on conformation.

Entry Fee	Division: \$250	Prize Money
1.	\$300 Green Conformation Hunter O/F 3'6"	\$90, \$66, \$45, \$30, \$21, \$18, \$15, \$15
2.	\$300 Green Conformation Hunter O/F 3'6"	\$90, \$66, \$45, \$30, \$21, \$18, \$15, \$15
3.	\$300 Green Conformation Hunter O/F 3'6"	\$90, \$66, \$45, \$30, \$21, \$18, \$15, \$15
4.	\$300 Green Conformation Hunter Handy Hunter 3'6"	\$90, \$66, \$45, \$30, \$21, \$18, \$15, \$15
5.	\$300 Green Conformation Hunter Under Saddle	\$90, \$66, \$45, \$30, \$21, \$18, \$15, \$15
<b>Champion and Reserve</b>		

## High Performance Conformation Hunter

High Performance Conformation fences to be at 3'9" and open to all horses.

All Conformation sections are to be judged 70% on performance, 30% on conformation.

Entry Fee	Division: \$250	Prize Money
6.	\$300 High Performance Conformation Hunter O/F 3'9"	\$90, \$66, \$45, \$30, \$21, \$18, \$15, \$15
7.	\$300 High Performance Conformation Hunter O/F 3'9"	\$90, \$66, \$45, \$30, \$21, \$18, \$15, \$15
8.	\$300 High Performance Conformation Hunter O/F 3'9"	\$90, \$66, \$45, \$30, \$21, \$18, \$15, \$15
9.	\$300 High Performance Conformation Hunter Handy Hunter 3'9"	\$90, \$66, \$45, \$30, \$21, \$18, \$15, \$15
10.	\$300 High Performance Conformation Hunter Under Saddle	\$90, \$66, \$45, \$30, \$21, \$18, \$15, \$15
<b>Champion and Reserve</b>		

## High Performance Hunter

Fences 4'. To be judged on performance and soundness. All horses being considered for an award must be serviceably sound.

Entry Fee	Division: \$300	Class: \$75	Prize Money
21.	\$350 High Performance Hunter 4' O/F		\$105, \$77, \$52.5, \$35, \$24.5, \$21, \$17.5, \$17.5
22.	\$350 High Performance Hunter 4' O/F		\$105, \$77, \$52.5, \$35, \$24.5, \$21, \$17.5, \$17.5
23.	\$350 High Performance Hunter 4' O/F Handy		\$105, \$77, \$52.5, \$35, \$24.5, \$21, \$17.5, \$17.5
25.	\$350 High Performance Hunter Under Saddle		\$105, \$77, \$52.5, \$35, \$24.5, \$21, \$17.5, \$17.5
<b>Champion and Reserve</b>			

# 

### 

Fence Heights 3'6"/3'9"

Entry Fee	Division: \$250	Prize Money
11.	\$250 Green Hunter O/F 3'6"/3'9"	\$75, \$55, \$37.5, \$25, \$17.5, \$15, \$12.5, \$12.5
12.	\$250 Green Hunter O/F 3'6"/3'9"	\$75, \$55, \$37.5, \$25, \$17.5, \$15, \$12.5, \$12.5
13.	\$250 Green Hunter O/F 3'6"/3'9"	\$75, \$55, \$37.5, \$25, \$17.5, \$15, \$12.5, \$12.5
14.	\$250 Green Hunter O/F 3'6"/3'9" Handy	\$75, \$55, \$37.5, \$25, \$17.5, \$15, \$12.5, \$12.5
15.	\$250 Green Hunter 3'6"/3'9" Under Saddle	\$75, \$55, \$37.5, \$25, \$17.5, \$15, \$12.5, \$12.5
Champion and Reserve		

### 

Entry Fee	Division: \$225	Prize Money
156.	\$200 Green Hunter 3'3" O/F	\$60, \$44, \$30, \$20, \$14, \$12, \$10, \$10
157.	\$200 Green Hunter 3'3" O/F	\$60, \$44, \$30, \$20, \$14, \$12, \$10, \$10
158.	\$200 Green Hunter 3'3" O/F	\$60, \$44, \$30, \$20, \$14, \$12, \$10, \$10
159.	\$200 Green Hunter 3'3" O/F <i>(runs conc w/ the Green Hunter Inc)</i>	\$60, \$44, \$30, \$20, \$14, \$12, \$10, \$10
160.	\$200 Green Hunter 3'3" Under Saddle	\$60, \$44, \$30, \$20, \$14, \$12, \$10, \$10
Champion and Reserve		

### 

Entry Fee	Division: \$225	Prize Money
151.	\$200 Green Hunter 3' O/F	\$60, \$44, \$30, \$20, \$14, \$12, \$10, \$10
152.	\$200 Green Hunter 3' O/F	\$60, \$44, \$30, \$20, \$14, \$12, \$10, \$10
153.	\$200 Green Hunter 3' O/F	\$60, \$44, \$30, \$20, \$14, \$12, \$10, \$10
154.	\$200 Green Hunter 3' O/F <i>(runs conc w/ the Green Hunter Inc)</i>	\$60, \$44, \$30, \$20, \$14, \$12, \$10, \$10
155.	\$200 Green Hunter 3' Under Saddle	\$60, \$44, \$30, \$20, \$14, \$12, \$10, \$10
Champion and Reserve		





# Quentin Fall Classic A-Rated Hunter Specs

## Junior Hunters

Riders must not have reached their 18th birthday. Fences 3'3" or 3'6". In all classes manners will be emphasized and extreme speed will be penalized. All horses being considered for an award must be serviceably sound. To be judged on performance and soundness.

### Champion and Reserve

## 3'6" Large Junior Working Hunter 15/U

Entry Fee	Division: \$250	Prize Money
46.	\$250 3'6" Large Junior Working Hunter O/F	\$75, \$55, \$37.5, \$25, \$17.5, \$15, \$12.5, \$12.5
47.	\$250 3'6" Large Junior Working Handy Hunter	\$75, \$55, \$37.5, \$25, \$17.5, \$15, \$12.5, \$12.5
48.	\$250 3'6" Large Junior Working Hunter O/F	\$75, \$55, \$37.5, \$25, \$17.5, \$15, \$12.5, \$12.5
49.	\$250 3'6" Large Junior Working Hunter O/F*	\$75, \$55, \$37.5, \$25, \$17.5, \$15, \$12.5, \$12.5
50.	\$250 3'6" Large Junior Working Under Saddle	\$75, \$55, \$37.5, \$25, \$17.5, \$15, \$12.5, \$12.5

### Champion and Reserve

## 3'6" Large Junior Working Hunter 16-17

Entry Fee	Division: \$250	Prize Money
36.	\$250 3'6" Large Junior Working Hunter O/F	\$75, \$55, \$37.5, \$25, \$17.5, \$15, \$12.5, \$12.5
37.	\$250 3'6" Large Junior Working Handy Hunter	\$75, \$55, \$37.5, \$25, \$17.5, \$15, \$12.5, \$12.5
38.	\$250 3'6" Large Junior Working Hunter O/F	\$75, \$55, \$37.5, \$25, \$17.5, \$15, \$12.5, \$12.5
39.	\$250 3'6" Large Junior Working Hunter O/F*	\$75, \$55, \$37.5, \$25, \$17.5, \$15, \$12.5, \$12.5
40.	\$250 3'6" Large Junior Working Under Saddle	\$75, \$55, \$37.5, \$25, \$17.5, \$15, \$12.5, \$12.5

### Champion and Reserve

## 3'6" Small Junior Working Hunter 15/U

Entry Fee	Division: \$250	Prize Money
51.	\$250 3'6" Small Junior Working Hunter O/F	\$75, \$55, \$37.5, \$25, \$17.5, \$15, \$12.5, \$12.5
52.	\$250 3'6" Small Junior Working Handy Hunter	\$75, \$55, \$37.5, \$25, \$17.5, \$15, \$12.5, \$12.5
53.	\$250 3'6" Small Junior Working Hunter O/F	\$75, \$55, \$37.5, \$25, \$17.5, \$15, \$12.5, \$12.5
54.	\$250 3'6" Small Junior Working Hunter O/F*	\$75, \$55, \$37.5, \$25, \$17.5, \$15, \$12.5, \$12.5
55.	\$250 3'6" Small Junior Working Under Saddle	\$75, \$55, \$37.5, \$25, \$17.5, \$15, \$12.5, \$12.5

### Champion and Reserve

## 3'6" Small Junior Working Hunter 16-17

Entry Fee	Division: \$250	Prize Money
41.	\$250 3'6" Small Junior Working Hunter O/F	\$75, \$55, \$37.5, \$25, \$17.5, \$15, \$12.5, \$12.5
42.	\$250 3'6" Small Junior Working Handy Hunter	\$75, \$55, \$37.5, \$25, \$17.5, \$15, \$12.5, \$12.5
43.	\$250 3'6" Small Junior Working Hunter O/F	\$75, \$55, \$37.5, \$25, \$17.5, \$15, \$12.5, \$12.5
44.	\$250 3'6" Small Junior Working Hunter O/F*	\$75, \$55, \$37.5, \$25, \$17.5, \$15, \$12.5, \$12.5
45.	\$250 3'6" Small Junior Working Under Saddle	\$75, \$55, \$37.5, \$25, \$17.5, \$15, \$12.5, \$12.5

### Champion and Reserve

## Quentin Fall Classic A-Rated Hunter Specs

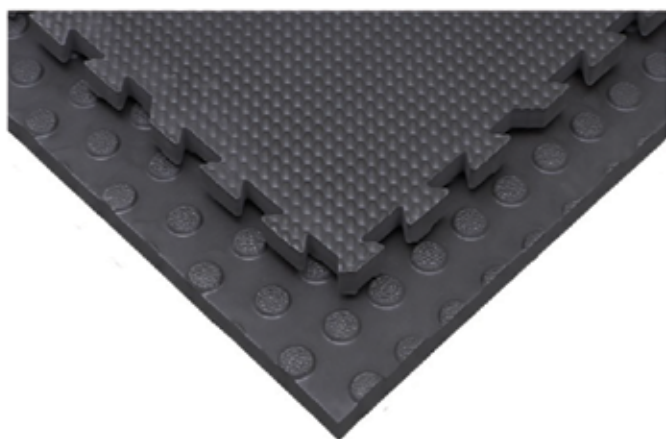
### 3'3" Large Junior Working Hunter

Entry Fee	Division: \$225	Prize Money
56.	\$200 3'3" Large Junior Working Hunter O/F	\$60, \$44, \$30, \$20, \$14, \$12, \$10, \$10
57.	\$200 3'3" Large Junior Working Handy Hunter	\$60, \$44, \$30, \$20, \$14, \$12, \$10, \$10
58.	\$200 3'3" Large Junior Working Hunter O/F	\$60, \$44, \$30, \$20, \$14, \$12, \$10, \$10
59.	\$200 3'3" Large Junior Working Hunter O/F*	\$60, \$44, \$30, \$20, \$14, \$12, \$10, \$10
60.	\$200 3'3" Large Junior Working Under Saddle	\$60, \$44, \$30, \$20, \$14, \$12, \$10, \$10
Champion and Reserve		

### 3'3" Small Junior Working Hunter

Entry Fee	Division: \$225	Prize Money
61.	\$200 3'3" Small Junior Working Hunter O/F	\$60, \$44, \$30, \$20, \$14, \$12, \$10, \$10
62.	\$200 3'3" Small Junior Working Handy Hunter	\$60, \$44, \$30, \$20, \$14, \$12, \$10, \$10
63.	\$200 3'3" Small Junior Working Hunter O/F	\$60, \$44, \$30, \$20, \$14, \$12, \$10, \$10
64.	\$200 3'3" Small Junior Working Hunter O/F*	\$60, \$44, \$30, \$20, \$14, \$12, \$10, \$10
65.	\$200 3'3" Small Junior Working Under Saddle	\$60, \$44, \$30, \$20, \$14, \$12, \$10, \$10
Champion and Reserve		

# Steward Lite Horse Mats



- ◇ Comfortable Lightweight, 37lbs
  - Size 4' x 6' x 1 1/2" thick
  - Interlock or straight-edge
  - Proven for 8 years
- ◇ Excellent for horse & wash stalls, sale floors, show circuits, trailers and semen collection floors
- ◇ Great for frail animals
- ◇ Insulates against cold and dampness

***Many other mat options also available from ShowEase!***



**592 W. Trout Run Road, Ephrata, PA 17522**

**Phone 717-299-2536; Fax 717-299-1074**



# Quentin Fall Classic A-Rated Hunter Specs

## Amateur Owner Hunter

To be ridden by Amateur Owners or an amateur member of the owner's family. In either case classes are restricted to riders who are no longer eligible to compete as junior exhibitors. To be judged on performance and soundness. If conformation is to be judged, it may not count more than 25%. All horses being considered for an award must be serviceably sound. Fences 3'3" or 3'6".

### Champion and Reserve

## 3'6" Amateur Owner Working Hunter 18-35

Entry Fee	Division: \$250	Prize Money
81.	\$250 3'6" Amateur Owner Working Hunter 18-35 O/F	\$75, \$55, \$37.5, \$25, \$17.5, \$15, \$12.5, \$12.5
82.	\$250 3'6" Amateur Owner 18-35 Handy Hunter	\$75, \$55, \$37.5, \$25, \$17.5, \$15, \$12.5, \$12.5
83.	\$250 3'6" Amateur Owner Working Hunter 18-35 O/F	\$75, \$55, \$37.5, \$25, \$17.5, \$15, \$12.5, \$12.5
84.	\$250 3'6" Amateur Owner Working Hunter 18-35 O/F*	\$75, \$55, \$37.5, \$25, \$17.5, \$15, \$12.5, \$12.5
85.	\$250 3'6" Amateur Owner 18-35 Under Saddle	\$75, \$55, \$37.5, \$25, \$17.5, \$15, \$12.5, \$12.5

### Champion and Reserve

## 3'6" Amateur Owner Working Hunter 36 and Over

Entry Fee	Division: \$250	Prize Money
86.	\$250 3'6" Amateur Owner Working Hunter 36+ O/F	\$75, \$55, \$37.5, \$25, \$17.5, \$15, \$12.5, \$12.5
87.	\$250 3'6" Amateur Owner 36+ Handy Hunter	\$75, \$55, \$37.5, \$25, \$17.5, \$15, \$12.5, \$12.5
88.	\$250 3'6" Amateur Owner Working Hunter 36+ O/F	\$75, \$55, \$37.5, \$25, \$17.5, \$15, \$12.5, \$12.5
89.	\$250 3'6" Amateur Owner Working Hunter 36+ O/F*	\$75, \$55, \$37.5, \$25, \$17.5, \$15, \$12.5, \$12.5
90.	\$250 3'6" Amateur Owner Working Under Saddle	\$75, \$55, \$37.5, \$25, \$17.5, \$15, \$12.5, \$12.5

### Champion and Reserve

## 3'3" Amateur Owner Working Hunter 18-35

Entry Fee	Division: \$225	Prize Money
91.	\$200 3'3" Amateur Owner Working Hunter 18-35 O/F	\$60, \$44, \$30, \$20, \$14, \$12, \$10, \$10
92.	\$200 3'3" Amateur Owner 18-35 Handy Hunter	\$60, \$44, \$30, \$20, \$14, \$12, \$10, \$10
93.	\$200 3'3" Amateur Owner Working Hunter 18-35 O/F	\$60, \$44, \$30, \$20, \$14, \$12, \$10, \$10
94.	\$200 3'3" Amateur Owner Working Hunter 18-35 O/F*	\$60, \$44, \$30, \$20, \$14, \$12, \$10, \$10
95.	\$200 3'3" Amateur Owner 18-35 Hunter Under Saddle	\$60, \$44, \$30, \$20, \$14, \$12, \$10, \$10

### Champion and Reserve

## 3'3" Amateur Owner Working Hunter 36 and Over

Entry Fee	Division: \$225	Prize Money
96.	\$200 3'3" Amateur Owner Working Hunter 36+ O/F	\$60, \$44, \$30, \$20, \$14, \$12, \$10, \$10
97.	\$200 3'3" Amateur Owner 36+ Handy Hunter	\$60, \$44, \$30, \$20, \$14, \$12, \$10, \$10
98.	\$200 3'3" Amateur Owner Working Hunter 36+ O/F	\$60, \$44, \$30, \$20, \$14, \$12, \$10, \$10
99.	\$200 3'3" Amateur Owner Working Hunter 36+ O/F*	\$60, \$44, \$30, \$20, \$14, \$12, \$10, \$10
100.	\$200 3'3" Amateur Owner 36+ Under Saddle	\$60, \$44, \$30, \$20, \$14, \$12, \$10, \$10

### Champion and Reserve

# Quentin Fall Classic A-Rated Hunter Specs

## Regular Pony Hunter

Manners of the pony and suitability of the pony to the rider must be emphasized in all classes. Extreme speed must be penalized. Suitability of a pony for a rider is determined by height of rider as related to the height of the pony. Judges must penalize but not necessarily eliminate an entry not having such suitability and manners. To be judged on performance and soundness. Small ponies to jump 2'3". Medium ponies to jump 2'6". Large ponies to jump 2'9"-3'. Distances adjusted based on height of Pony.

## Small Pony Working Hunter

Entry Fee	Division: \$225	Prize Money
121.	\$250 Small Pony Working Hunter Conf O/F	\$75, \$55, \$37.5, \$25, \$17.5, \$15, \$12.5, \$12.5
122.	\$250 Small Pony Working Hunter Handy Hunter	\$75, \$55, \$37.5, \$25, \$17.5, \$15, \$12.5, \$12.5
123.	\$250 Small Pony Working Hunter O/F	\$75, \$55, \$37.5, \$25, \$17.5, \$15, \$12.5, \$12.5
124.	\$250 Small Pony Working Hunter O/F*	\$75, \$55, \$37.5, \$25, \$17.5, \$15, \$12.5, \$12.5
125.	\$250 Small Pony Working Hunter Under Saddle	\$75, \$55, \$37.5, \$25, \$17.5, \$15, \$12.5, \$12.5
Champion and Reserve		

## Medium Pony Working Hunter

Entry Fee	Division: \$225	Prize Money
126.	\$250 Medium Pony Working Hunter Conf O/F	\$75, \$55, \$37.5, \$25, \$17.5, \$15, \$12.5, \$12.5
127.	\$250 Medium Pony Working Hunter Handy Hunter	\$75, \$55, \$37.5, \$25, \$17.5, \$15, \$12.5, \$12.5
128.	\$250 Medium Pony Working Hunter O/F	\$75, \$55, \$37.5, \$25, \$17.5, \$15, \$12.5, \$12.5
129.	\$250 Medium Pony Working Hunter O/F*	\$75, \$55, \$37.5, \$25, \$17.5, \$15, \$12.5, \$12.5
130.	\$250 Medium Pony Working Hunter Under Saddle	\$75, \$55, \$37.5, \$25, \$17.5, \$15, \$12.5, \$12.5
Champion and Reserve		

## Large Pony Working Hunter

Entry Fee	Division: \$225	Prize Money
131.	\$250 Large Pony Working Hunter Conf O/F	\$75, \$55, \$37.5, \$25, \$17.5, \$15, \$12.5, \$12.5
132.	\$250 Large Pony Working Hunter Handy Hunter	\$75, \$55, \$37.5, \$25, \$17.5, \$15, \$12.5, \$12.5
133.	\$250 Large Pony Working Hunter O/F	\$75, \$55, \$37.5, \$25, \$17.5, \$15, \$12.5, \$12.5
134.	\$250 Large Pony Working Hunter O/F*	\$75, \$55, \$37.5, \$25, \$17.5, \$15, \$12.5, \$12.5
135.	\$250 Large Pony Working Hunter Under Saddle	\$75, \$55, \$37.5, \$25, \$17.5, \$15, \$12.5, \$12.5
Champion and Reserve		



# Quentin Fall Classic A-Rated Hunter Specs

## Green Pony Hunter

Manners of the pony and suitability of the pony to the rider must be emphasized in all classes. Extreme speed must be penalized. Suitability of a pony for a rider is determined by height of rider as related to the height of the pony. Judges must penalize but not necessarily eliminate an entry not having such suitability and manners. To be judged on performance and soundness. Small ponies to jump 2'3". Medium ponies to jump 2'6". Large ponies to jump 2'9"-3'. Distances adjusted based on height of Pony.

## Small /Medium Green Pony Hunter

Entry Fee	Division: \$225	Prize Money
111.	\$200 Small/Medium Green Pony Hunter Conf O/F	\$60, \$44, \$30, \$20, \$14, \$12, \$10, \$10
112.	\$200 Small/Medium Green Pony Hunter O/F	\$60, \$44, \$30, \$20, \$14, \$12, \$10, \$10
113.	\$200 Small/Medium Green Pony Hunter O/F	\$60, \$44, \$30, \$20, \$14, \$12, \$10, \$10
114.	\$200 Small/Medium Green Pony Hunter O/F	\$60, \$44, \$30, \$20, \$14, \$12, \$10, \$10
115.	\$200 Small/Medium Green Pony Hunter Under Saddle	\$60, \$44, \$30, \$20, \$14, \$12, \$10, \$10

**Champion and Reserve**

## Large Green Pony Hunter

Entry Fee	Division: \$225	Prize Money
116.	\$200 Large Green Pony Hunter Conf O/F	\$60, \$44, \$30, \$20, \$14, \$12, \$10, \$10
117.	\$200 Large Green Pony Hunter O/F	\$60, \$44, \$30, \$20, \$14, \$12, \$10, \$10
118.	\$200 Large Green Pony Hunter O/F	\$60, \$44, \$30, \$20, \$14, \$12, \$10, \$10
119.	\$200 Large Green Pony Hunter O/F	\$60, \$44, \$30, \$20, \$14, \$12, \$10, \$10
120.	\$200 Large Green Pony Hunter Under Saddle	\$60, \$44, \$30, \$20, \$14, \$12, \$10, \$10

**Champion and Reserve**

## 3'3" Performance Working Hunter

Entry Fee	Division: \$225	Class: \$50	Prize Money
31.	\$200 3'3" Performance Working Hunter O/F		\$60, \$44, \$30, \$20, \$14, \$12, \$10, \$10
32.	\$200 3'3" Performance Working Hunter O/F		\$60, \$44, \$30, \$20, \$14, \$12, \$10, \$10
33.	\$200 3'3" Performance Working Hunter O/F		\$60, \$44, \$30, \$20, \$14, \$12, \$10, \$10
34.	\$200 3'3" Performance Working Hunter Handy		\$60, \$44, \$30, \$20, \$14, \$12, \$10, \$10
35.	\$200 3'3" Performance Working Hunter Under Saddle		\$60, \$44, \$30, \$20, \$14, \$12, \$10, \$10

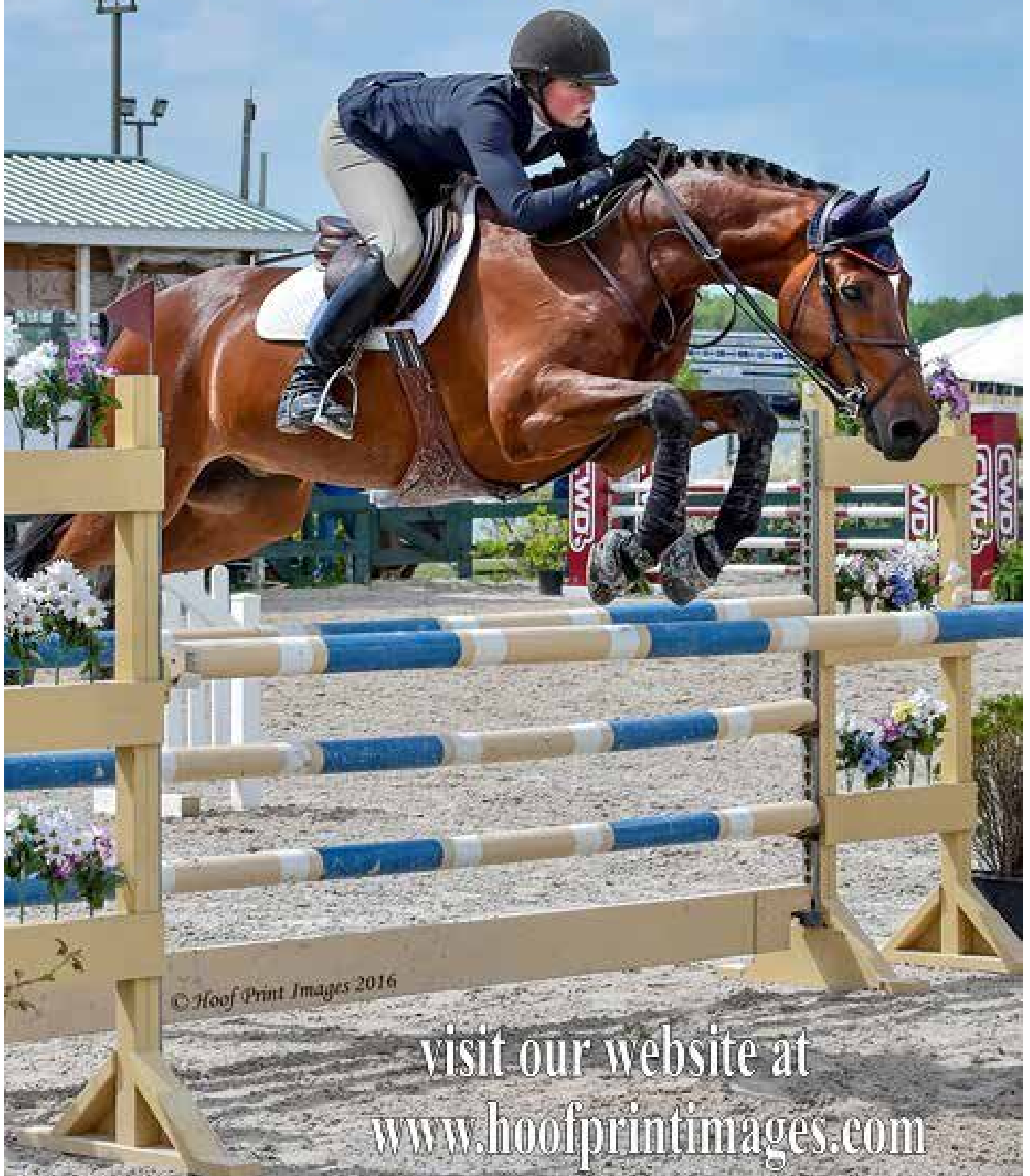
**Champion and Reserve**

## 3'6" Performance Working Hunter

Entry Fee	Division: \$225	Class: \$50	Prize Money
26.	\$200 3'6" Performance Working Hunter O/F		\$60, \$44, \$30, \$20, \$14, \$12, \$10, \$10
27.	\$200 3'6" Performance Working Hunter O/F		\$60, \$44, \$30, \$20, \$14, \$12, \$10, \$10
28.	\$200 3'6" Performance Working Hunter O/F		\$60, \$44, \$30, \$20, \$14, \$12, \$10, \$10
29.	\$200 3'6" Performance Working Hunter Handy		\$60, \$44, \$30, \$20, \$14, \$12, \$10, \$10
30.	\$200 3'6" Performance Working Hunter Under Saddle		\$60, \$44, \$30, \$20, \$14, \$12, \$10, \$10

**Champion and Reserve**

# Hoof Print Images Photography



# Quentin Fall Classic C-Rated Hunter Specs

## Children's Hunter Horse

See Zone #2 Specifications: [www.USHJA.org](http://www.USHJA.org)

### 3' Children's Hunter Horse 14 and Under

Entry Fee	Division: \$175	Class: \$45	Prize Money
181.	\$100 3' Children's Hunter Horse 14 & Under O/F		\$15, \$11, \$7.5, \$5, \$3.5, \$3, \$2.5, \$2.5
182.	\$100 3' Children's Hunter Horse 14 & Under O/F		\$15, \$11, \$7.5, \$5, \$3.5, \$3, \$2.5, \$2.5
183.	\$100 3' Children's Hunter Horse 14 & Under O/F*		\$15, \$11, \$7.5, \$5, \$3.5, \$3, \$2.5, \$2.5
185.	3' Children's Hunter Horse 14 & Under Under Saddle		

**Champion and Reserve**

### 3' Children's Hunter Horse 15-17

Entry Fee	Division: \$175	Class: \$45	Prize Money
186.	\$100 3' Children's Hunter Horse 15-17 O/F		\$15, \$11, \$7.5, \$5, \$3.5, \$3, \$2.5, \$2.5
187.	\$100 3' Children's Hunter Horse 15-17 O/F		\$15, \$11, \$7.5, \$5, \$3.5, \$3, \$2.5, \$2.5
188.	\$100 3' Children's Hunter Horse 15-17 O/F*		\$15, \$11, \$7.5, \$5, \$3.5, \$3, \$2.5, \$2.5
190.	3' Children's Hunter Horse Under Saddle		

**Champion and Reserve**

## Children's Hunter Pony

See Zone #2 Specifications: [www.USHJA.org](http://www.USHJA.org)

### 2' Small/Medium Children's Hunter Pony

Entry Fee	Division: \$150	Class: \$40	Prize Money
191.	\$100 Small/Medium Children's Hunter Pony O/F		\$15, \$11, \$7.5, \$5, \$3.5, \$3, \$2.5, \$2.5
192.	\$100 Small/Medium Children's Hunter Pony O/F		\$15, \$11, \$7.5, \$5, \$3.5, \$3, \$2.5, \$2.5
193.	\$100 Small/Medium Children's Hunter Pony O/F*		\$15, \$11, \$7.5, \$5, \$3.5, \$3, \$2.5, \$2.5
194.	Small/Medium Children's Hunter Pony Under Saddle		

**Champion and Reserve**

### 2'6" Large Children's Hunter Pony

Entry Fee	Division: \$150	Class: \$40	Prize Money
196.	\$100 Large Children's Hunter Pony O/F		\$15, \$11, \$7.5, \$5, \$3.5, \$3, \$2.5, \$2.5
197.	\$100 Large Children's Hunter Pony O/F		\$15, \$11, \$7.5, \$5, \$3.5, \$3, \$2.5, \$2.5
198.	\$100 Large Children's Hunter Pony O/F*		\$15, \$11, \$7.5, \$5, \$3.5, \$3, \$2.5, \$2.5
199.	Large Children's Hunter Pony Under Saddle		

**Champion and Reserve**



# Quentin Fall Classic C-Rated Hunter Specs

## Adult Amateur Hunter

See Zone #2 Specifications: [www.USHJA.org](http://www.USHJA.org)

### 3' Adult Amateur Hunter 18-35

Entry Fee	Division: \$175	Class: \$45	Prize Money
171.	\$100 3' Adult Amateur Hunter 18-35 O/F		\$15, \$11, \$7.5, \$5, \$3.5, \$3, \$2.5, \$2.5
172.	\$100 3' Adult Amateur Hunter 18-35 O/F		\$15, \$11, \$7.5, \$5, \$3.5, \$3, \$2.5, \$2.5
173.	\$100 3' Adult Amateur Hunter 18-35 O/F*		\$15, \$11, \$7.5, \$5, \$3.5, \$3, \$2.5, \$2.5
175.	3' Adult Amateur Hunter 18-35 Under Saddle		

**Champion and Reserve**

### 3' Adult Amateur Hunter 36+

Entry Fee	Division: \$175	Class: \$45	Prize Money
166.	\$100 3' Adult Amateur Hunter 36+ O/F		\$15, \$11, \$7.5, \$5, \$3.5, \$3, \$2.5, \$2.5
167.	\$100 3' Adult Amateur Hunter 36+ O/F		\$15, \$11, \$7.5, \$5, \$3.5, \$3, \$2.5, \$2.5
168.	\$100 3' Adult Amateur Hunter 36+ O/F*		\$15, \$11, \$7.5, \$5, \$3.5, \$3, \$2.5, \$2.5
170.	3' Adult Amateur Hunter 36+ Under Saddle		

**Champion and Reserve**

### 3' Small Working Hunter

Entry Fee	Division: \$175	Class: \$45	Prize Money
226.	\$100 3' Small Working Hunter O/F		\$15, \$11, \$7.5, \$5, \$3.5, \$3, \$2.5, \$2.5
227.	\$100 3' Small Working Hunter O/F		\$15, \$11, \$7.5, \$5, \$3.5, \$3, \$2.5, \$2.5
228.	\$100 3' Small Working Hunter O/F		\$15, \$11, \$7.5, \$5, \$3.5, \$3, \$2.5, \$2.5
230.	3' Small Working Hunter Under Saddle		

**Champion and Reserve**

### 3' Thoroughbred Hunter (Take 2 and TIP)

Entry Fee	Division: \$175	Class: \$40	Prize Money
386.	\$100 Thoroughbred Hunter O/F		\$15, \$11, \$7.5, \$5, \$3.5, \$3, \$2.5, \$2.5
387.	\$100 Thoroughbred Hunter O/F		\$15, \$11, \$7.5, \$5, \$3.5, \$3, \$2.5, \$2.5
388.	\$100 Thoroughbred Hunter O/F		\$15, \$11, \$7.5, \$5, \$3.5, \$3, \$2.5, \$2.5
389.	Thoroughbred Hunter Under Saddle		

**Champion and Reserve**

# Quentin Fall Classic Un-Rated Hunter Specs

\*See Stirrup Cup Specs. Open to horses and ponies

## 3'0" USHJA Hunter

**Entry Fee**      **Division: \$150**      **Class: \$40**

381.    3'0" USHJA Hunter O/F

382.    3'0" USHJA Hunter O/F

383.    3'0" USHJA Hunter O/F

384.    3'0" USHJA Hunter Under Saddle

**Champion and Reserve**

## 2'9" USHJA Hunter

**Entry Fee**      **Division: \$150**      **Class: \$40**

366.    2'9" USHJA Hunter O/F

367.    2'9" USHJA Hunter O/F

368.    2'9" USHJA Hunter O/F

369.    2'9" USHJA Hunter Under Saddle

**Champion and Reserve**

## 2'6" USHJA Hunter

**Entry Fee**      **Division: \$150**      **Class: \$40**

336.    2'6" USHJA Hunter O/F

337.    2'6" USHJA Hunter O/F

338.    2'6" USHJA Hunter O/F

339.    2'6" USHJA Hunter Under Saddle

**Champion and Reserve**

## 2'3" USHJA Hunter

**Entry Fee**      **Division: \$150**      **Class: \$40**

321.    2'3" USHJA Hunter O/F

322.    2'3" USHJA Hunter O/F

323.    2'3" USHJA Hunter O/F

324.    2'3" USHJA Hunter Under Saddle

**Champion and Reserve**

## 2' USHJA Hunter

**Entry Fee**      **Division: \$150**      **Class: \$40**

311.    2' USHJA Hunter O/F

312.    2' USHJA Hunter O/F

313.    2' USHJA Hunter O/F

314.    2' USHJA Hunter Under Saddle

**Champion and Reserve**



**Adams County Auto Supply Inc.**  
340 E. Middle Street  
Gettysburg PA, 17325  
(717) 334 - 0071

**Mason Dixon Auto Supply**  
117 E. Baltimore Street  
Taneytown PA, 21787  
(410) 756 - 2044

**Five Points Automotive**  
285 Frederick Street  
Hanover PA,  
(717) 632 - 8646

**Get the  
Good Stuff®**



**Stronger.  
Greener.  
Better.**

**Talk to our plant manager,  
Jason Lawrence, for a  
free estimate!**

**(717) 630-0479  
info@lpcpowdercoating.com**

**Hours: 7AM - 4PM  
Monday - Friday**



**238 Factory Street—Hanover, Pa 17331**

# Quentin Fall Classic Tentative Time Schedule

## Thursday

### Grand Prix Arena

8:00 a.m.

411.	1.0m Jumper 2.2.b
446.	1.0m TB Jumper 2.2.b
421.	1.05m Jumper 2.1
422.	1.10m Jumper 2.1
426.	1.15m Jumper 2.2.b
431.	\$500 1.20m Jumper 2.2.b
436.	\$600 1.30m Jumper II.1
650.	<b>\$5000 1.30m Open Welcome</b>
515.	5 Y/O Young Jumper Table II
520.	6 Y/O Young Jumper
525.	7 Y/O Young Jumper
511.	0.70m Jumper 2.2.b
512.	0.70m Jumper 2.1
401.	0.80m Jumper 2.2.b
406.	0.90m Jumper 2.2.b

### Main Hunter Ring

9:00 a.m.

Blue/Red (all day)	
376, 377	Low Hunter 3'/3'3"(open w green 3'/3'3")
151, 152	\$200 Green Hunter 3' O/F
155.	\$200 Green Hunter 3' U/S
156, 157	\$200 Green Hunter 3'3" O/F
160.	\$200 Green Hunter 3'3" U/S
31, 32	\$200 3'3" Performance Hunter O/F
26, 27	\$250 3'6" Performance Hunter O/F
11, 12.	\$250 Green Hunter 3'6"/3'9" O/F
15.	\$250 Green Hunter 3'6"/3'9" U/S
1,2.	\$300 Green Conformation O/F
5.	\$300 Green Conformation U/S
6, 7.	\$300 High Performance Conformation O/F
10.	\$300 High Performance Conformation U/S
21-23**	\$350 High Performance Hunter 4' O/F
25.	\$350 High Performance Hunter 4' U/S

### Annex Ring

2:00 p.m.

#### Hunter Breeding

1002	PA Bred Yearling Colts & Geldings
1003	TB & Non TB Reg Yrlg Colts & Geldings
1004	Non TB Yearling Colts & Geldings
1005	PA Bred Yearling Fillies
1006	TB & Non TB Reg Yearling Fillies
1007	Non TB Yearling Fillies
1008	PA Bred 2 YO Colts & Geldings
1009	TB & Non Reg TB 2 YO Colts & Geldings
1010	Non TB 2 YO Colts & Geldings
1011	PA Bred 2 YO Fillies
1012	TB & Non Reg TB 2 YO Fillies
1013	Non TB 2 YO Fillies
1014	PA Bred 3 YO
1015	TB & Non Reg TB 3 YO
1016	Non TB 3 YO
1017	Mares 4 Years Old & Older
1018	<b>Best PA Horse Champion &amp; Reserve</b>
1019	<b>Best Young Horse Champion &amp; Reserve</b>
1001	Amateur/Junior Handler
1021	PA Bred Hunter Pony Yearling
1022	Hunter Pony Yearling Colts & Geldings
1023	Hunter Pony Yearling Fillies
1024	PA Bred Hunter Pony 2 Year Old
1025	Hunter Pony 2 YO Colts & Geldings
1026	Hunter Pony 2 Year Old Fillies
1027	PA Bred Hunter Pony 3 Year Old
1028	Hunter Pony 3 Year Old
1029	<b>PA Bred Hunter Pony Champion &amp; Reserve</b>
1030	<b>Hunter Pony Champion &amp; Reserve</b>
1031	Young Hunter U/S
1032	Young Working Hunter U/S
1033	Young Hunter Pony U/S

### Bridge Ring

12:00-5:00

Ticketed Schooling

Ticket Schooling in the Main and Ring  
until 5:00 Weather and Time Permitting

## Friday

### Grand Prix Arena

8:00 a.m.

412.	1.0m Jumper 2.1
447.	1.0m Take2 TB Jumper 2.1
427.	1.15m Jumper 2.1
432.	\$500 1.20m Jumper 2.1
491.	\$500 1.20m Low Jr/AO Jumper 2.1
437.	\$600 1.30m Jumper 2.1
506.	\$1000 1.30m/1.40m Jr/AO Jumper
640.	\$3000 1.40 Open Speed Stake
516.	5 Y/O Young Jumper Table II
521.	\$500 6 Y/O Young Jumper
526.	\$500 7 Y/O Young Jumper
513.	0.70m Jumper 2.1
402.	0.80m Jumper 2.1
535.	<b>\$250 0.80m Jumper Classic 2.2.b</b>
407.	0.90m Jumper 2.1
540.	<b>\$250 0.90m Classic 2.2b</b>
461.	\$150 1.0m Low Child/Adult Jumper II.1
476.	\$250 1.10m High Child/Adult Jumper II.1
530.	1.05m Pony Jumper 2.2.b
531.	1.05m Pony Jumper 2.1

### Main Hunter Ring

9:00 a.m.

Blue/Red (all day)	
378, 379	Low Hunter 3'/3'3" O/F (open w green 3'/3'3")
380.	Low Hunter U/S
153, 154	\$200 Green Hunter 3' O/F
158, 159	\$200 Green Hunter 3'3" O/F
970.	<b>\$1500 Green Hunter Incentive</b>
386-388	\$100 TIP/Take2 Thoroughbred Hunter O/F
389.	TIP/Take2 Thoroughbred Hunter U/S
226-228	\$100 Small Hunter 3' O/F
230.	\$100 Small Hunter 3' U/S
33, 34**	\$200 Performance Hunter 3'3" O/F
35.	\$200 Performance Hunter 3'3" U/S
28, 29**	\$200 Performance Hunter 3'6" O/F
30.	\$200 Performance Hunter 3'6" U/S
13, 14**	\$250 Green Hunter 3'6"/3'9" O/F
3, 4**	\$300 Green Conformation O/F
8, 9**	\$300 High Performance Conformation O/F

### Bridge Ring

9:00 a.m.

Blue/Red (all day)	
311-313	USHJA 2' Hunter O/F
314	USHJA 2' Hunter U/S
321-323	USHJA 2'3" Hunter O/F
324	USHJA 2'3" Hunter U/S
336-338	USHJA 2'6" Hunter O/F
339.	USHJA 2'6" Hunter U/S
201-203	TIP Low TB Hunter 2'6" O/F
204.	TIP Low TB Hunter U/S
341-343.	Baby Green Hunter 2'6" O/F
344.	Baby Green Hunter U/S
366-368	USHJA 2'9" Hunter O/F
369.	USHJA 2'9" Hunter U/S
381-383	USHJA 3' Hunter O/F
384.	USHJA 3' Hunter U/S
361-363	Mod Pre-Child/Adult Hunter 2'2'6"/2'9" O/F
364.	Mod Pre-Child/Adult Hunter U/S

Ticket Schooling in the Main and Bridge

Rings until 5:00 Weather and Time Permitting

\* First round of Classic

\*\* Handy Hunter

### Annex Ring

Flat work only until an hour before start time

**Start at the conclusion of one hunter ring**

950. **\$5000 3' National Hunter Derby**

# Quentin Fall Classic Tentative Time Schedule

## Saturday

### Grand Prix Arena

#### 7:30 a.m.

706.	1.05m Open Eq Warm Up
704.	WIHS Jumper Phase
700.	USEF Talent Search

#### 8:30 a.m.

413.	1.0m Jumper 2.1
450.	<b>\$500 1.0m Take2 TB Jumper Classic 2.2.b</b>
462.	\$150 1.0m Low Child/Adult Jumper 2.2.b
477.	\$250 1.10m High Child/Adult Jumper 2.2.b
428.	1.15m Jumper 2.1
433.	\$500 1.20m Jumper 2.1
492.	\$500 1.20m Low Jr/AO Jumper 2.2.b
507.	\$1000 1.30/1.40m Jr/AO Jumper 2.2.b

#### 3:00 p.m.

775-777	Leadline
670.	<b>\$25,000 Quentin Fall Classic Grand Prix</b>

### Main Hunter Ring

#### 8:30 a.m. or after completion of USEF Talent Search

701.	Maclay 3'6"
703.	WIHS Hunter Phase 3'6" (open card)
46, 47**	\$250 3'6" Large Junior Hunter 15/U O/F
50.	\$250 3'6" Large Junior Hunter 15/U U/S
36, 37**	\$250 3'6" Large Junior Hunter 16-17 O/F
40.	\$250 3'6" Large Junior Hunter 16-17 U/S
51, 52**	\$250 3'6" Small Junior Hunter 15/U O/F
55.	\$250 3'6" Small Junior Hunter 15/U U/S
41, 42**	\$250 3'6" Small Junior Hunter 16-17 O/F
45.	\$250 3'6" Small Junior Hunter 16-17 U/S
710.	MHSA Hunt Seat on Horses 3'3"
708.	M&S 3'3" Jr/Am Horsemanship Medal
56, 57**	\$200 3'3" Large Junior Hunter O/F
60	\$200 3'3" Large Junior Hunter U/S
61, 62**	\$200 3'3" Small Junior Hunter O/F
65.	\$200 3'3" Small Junior Hunter U/S
91, 92**	\$200 3'3" Amateur Owner Hunter 18-35 O/F
95.	\$200 3'3" Amateur Owner Hunter 18-35 U/S
96, 97**	\$200 3'3" Amateur Owner Hunter 36+ O/F
100..	\$200 3'3" Amateur Owner Hunter 36+ U/S
81, 82**	\$250 3'6" Amateur Owner Hunter 18-35 O/F
85.	\$250 3'6" Amateur Owner Hunter 18-35 U/S
86, 87**	\$250 3'6" Amateur Owner Hunter 36+
90.	\$250 3'6" Amateur Owner Hunter 36+

### Annex Ring

726.	M&S/CPJHSA 3' Adult Equitation
727.	MHSA 3' Adult Equitation
725.	Ariat Adult Hunter Medal
171-173.	\$100 Adult Hunter 18-35 3' O/F
175.	Adult Hunter 18-35 3' U/S
166-168.	\$100 Adult Hunter 3' 36+ 3' O/F
170.	Adult Hunter 3' 36+ U/S
905.	<b>\$500 NAL/WIHS/M&amp;S Adult Hunter Classic</b>
966.	<b>2' Hunter Derby</b>
965.	<b>2'6" Hunter Derby</b>

### Bridge Ring

#### 8:00 a.m.

800.	Blue/Red - <i>Green Ponies only</i>
111, 112.	\$200 S/M Green Pony Hunter O/F
115.	\$200 S/M Green Pony Hunter U/S
116, 117.	\$200 Large Green Pony Hunter O/F
120.	\$200 Large Green Pony Hunter U/S
736.	USEF Pony Medal
735.	MHSA Pony Medal
131, 132**	\$250 Large Pony Hunter O/F
135.	\$250 Large Pony Hunter U/S
126, 127**	\$250 Medium Pony Hunter O/F
130.	\$250 Medium Pony Hunter U/S
121, 122**	\$250 Small Pony Hunter O/F
125.	\$250 Small Pony Hunter U/S
316-318.	Modified Hunter 2' pony/2'3" Horses O/F
319.	Modified Hunter U/S
771-774	Short Stirrup
758.	2' Pre-Children's Pony Eq
306-308*	Pre Children's Hunter Pony 2' O/F
309.	Pre Children's Hunter Pony 2' U/S
755.	M&S 2'6" Children's Medal
326-328*	Pre Children's Hunter Horse 2'6" O/F
329.	Pre Children's Hunter Horse 2'6" U/S
756.	M&S 2'6" Adult Medal
331-333*	Pre Adult Hunter 2'6" O/F
334.	Pre Adult Hunter 2'6" U/S
930.	<b>\$250 Pre-Child/Adult Classic</b>



# Sunday

## Grand Prix Arena

8:00 a.m.

414.	1.0m Jumper 2.1
610.	<b>\$750 Low Child/Adult Jumper Classic 1.0m 2.2.b</b>
423.	1.10 Jumper 2.1
555.	<b>\$1,500 Hess Equine NAL/WIHS/M&amp;S High Child/Adult Jumper Classic 1.10m 2.2.a</b>
429.	1.15m Jumper 2.2.b
580.	<b>\$2,500 NAL Jr/Ao Classic 1.20m 2.2.a</b>
595.	<b>\$3,500 SJHOF Jr/Ao Classic 1.30m/1.40m 2.2.a</b>

## Main Hunter Ring

8:00 a.m.

93, 94*	\$200 3'3" Amateur Owner Hunter 18-35 O/F
98, 99*	\$200 3'3" Amateur Owner Hunter 36+ O/F
83, 84*	\$250 3'6" Amateur Owner Hunter 18-35 O/F
88, 89*	\$250 3'6" Amateur Owner Hunter 36+ O/F
975.	<b>\$1000 3'3"/\$250 3'6" Amateur Owner Classic</b>
702.	USEF Medal
48, 49*	\$250 3'6" Large Junior Hunter 15/U O/F
38, 39*	\$250 3'6" Large Junior Hunter 16-17 O/F
53, 54*	\$250 3'6" Small Junior Hunter 15/U O/F
43, 44*	\$250 3'6" Small Junior Hunter 16-17 O/F
709	NCEA 3'3" Junior Medal
58, 59*	\$200 3'3" Large Junior Hunter O/F
63, 64*	\$200 3'3" Small Junior Hunter O/F
910.	<b>\$1000 3'3"/3'6" Junior Hunter Classic</b>

## Bridge Ring

8:00 a.m.

113, 114.	\$200 S/M Green Pony Hunter O/F
118, 119.	\$200 Large Green Pony Hunter O/F
737.	WIHS Pony Equitation (open w section)
133, 134*	\$250 Large Regular Pony Hunter O/F
128, 129*	\$250 Medium Regular Pony Hunter O/F
123, 124*	\$250 Small Regular Pony Hunter O/F
925.	<b>\$1000 Pony Hunter Classic</b>
746.	H&H Children's Pony Medal (OC)
745.	MHSA Children's Pony Medal (OC)
191-193*	\$100 S/M Children's Pony O/F
194.	\$100 S/M Children's Pony U/S
196-198*	\$100 Large Children's Pony O/F
199.	\$100 Large Children's Pony U/S
935	<b>\$250 Children's Pony Classic</b>

## Annex Ring

8:00 a.m.

715.	THIS Medal 3'
717.	Gittings
716.	Josey Mohler 3' Equitation
181-183.	\$100 Children's Hunter 3' 14/U O/F
185.	Children's Hunter 3' 14/U U/S
186-188.	\$100 Children's Hunter 3' 15-17 O/F
190.	Children's Hunter 3' 15-17 U/S
900.	<b>\$500 NAL/WIHS/M&amp;S Children's Hunter Classic</b>



# HESS EQUINE VETERINARY SERVICES



WELLNESS



PERFORMANCE



CONDITIONS

# We Believe in the Power *of* Nutrition

for **Wellness, Performance & Conditions**



See the ***Difference*** Platinum Performance® Can Make in Your Horse

Whether you are keeping a healthy horse healthy, a performance horse competing at the top of their game, or supporting a horse in recovery, Platinum can be a powerful tool. **100% Satisfaction Guaranteed.**

PLATINUM  
P E R F O R M A N C E

**NOURISH YOUR PASSION™**

PlatinumPerformance.com | 800.553.2400

© 2016 PLATINUM PERFORMANCE, INC.

# 

### TIP 2'6" Low Thoroughbred Hunter

Entry Fee      Division: \$150      Class: \$40

- 201. Low Thoroughbred Hunter O/F
- 202. Low Thoroughbred Hunter O/F
- 203. Low Thoroughbred Hunter O/F
- 204. Low Thoroughbred Hunter Under Saddle

**Champion and Reserve**

### 2'6" Baby Green Hunter

Entry Fee      Division: \$150      Class: \$40

Open to horses in their first or second year of showing. Trotting in corners not to be penalized.

- 341. Baby Green Hunter O/F
- 342. Baby Green Hunter O/F
- 343. Baby Green Hunter O/F
- 344. Baby Green Hunter Under Saddle

**Champion and Reserve**

### Pre Children's /Pre-Adult Hunter

\*See Stirrup Cup Specs

### Pre Children's Hunter Horse 2'6"

Entry Fee      Division: \$150      Class: \$40

- 326. Pre Children's Hunter Horse O/F
- 327. Pre Children's Hunter Horse O/F
- 328. Pre Children's Hunter Horse O/F
- 329. Pre Children's Hunter Horse Under Saddle

**Champion and Reserve**

### Pre Children's Hunter Pony 2'

Entry Fee      Division: \$150      Class: \$40

- 306. Pre Children's Hunter Pony O/F
- 307. Pre Children's Hunter Pony O/F
- 308. Pre Children's Hunter Pony O/F
- 309. Pre Children's Hunter Pony Under Saddle

**Champion and Reserve**

### Pre Adult Hunter 2'6"

Entry Fee      Division: \$150      Class: \$40

- 331. Pre Adult Hunter O/F
- 332. Pre Adult Hunter O/F
- 333. Pre Adult Hunter O/F
- 334. Pre Adult Hunter Under Saddle

**Champion and Reserve**

# Quentin Fall Classic Un-Rated Hunter Specs

## Leadline

### Entry Fee

**Class: \$10**

Open to junior riders who have not reached their 7th birthday.

775. Leadline

776. Leadline Off-Line

777. Leadline Walk-Trot

### Champion and Reserve

## Short Stirrup

### Entry Fee

**Class: \$10**

771. Short Stirrup WT

772. Short Stirrup WTC

773. Short Stirrup O/F

774. Short Stirrup O/F

### Champion and Reserve

## Modified Hunter 2' Pony 2'3" Horses

### Entry Fee: Div \$150

**Class: \$40**

Open to juniors and amateurs. Ponies to jump 2', horses to jump 2'3". No oxers. Trotting in corners not to be penalized. Cross entry into USEF rated hunter sections are permitted but with a different Rider/Horse/Pony combination.

316. Modified Hunter O/F

317. Modified Hunter O/F

318. Modified Hunter O/F

319. Modified Hunter Under Saddle

### Champion and Reserve

## Modified Pre-Child/Adult Hunter 2'2'6"/2'9"

### Entry Fee Div \$150

**Class: \$40**

Open to juniors and amateurs. Cross entry into Pre-Children's Hunter, Pre Adult Hunter, Children's Hunter or Adult Hunter is permitted.

361. Modified Pre-Child/Adult Hunter O/F

362. Modified Pre-Child/Adult Hunter O/F

363. Modified Pre-Child/Adult Hunter O/F

364. Modified Pre-Child/Adult Hunter Under Saddle

### Champion and Reserve

## 3' /3'3" Low Hunter

### Entry Fee Div \$180

**Class: \$40**

Open to all.

376. 3'/3'3" Low Working Hunter O/F

377. 3'/3'3" Low Working Hunter O/F

378. 3'/3'3" Low Working Hunter O/F

379. 3'/3'3" Low Working Hunter O/F

380. Low Working Hunter Under Saddle

### Champion and Reserve

# Quentin Fall Classic Hunter Classics

## \$1000 3'3"/\$250 3'6" Amateur Owner Classic

**Entry Fee: \$100**

**Prize Money**

975. \$1000 3'3"/3'6" Amateur Owner Hunter Classic \$300, \$220, \$150, \$100, \$70, \$60, \$50, \$50

## \$1000 3'3"/3'6" Junior Hunter Classic

**Entry Fee: \$100**

**Prize Money**

910. \$1000 3'3"/3'6" Junior Hunter Classic \$300, \$220, \$150, \$100, \$70, \$60, \$50, \$50

## \$1000 Pony Hunter Classic

**Entry Fee: \$100**

**Prize Money**

925. \$1000 Pony Hunter Classic \$300, \$220, \$150, \$100, \$70, \$60, \$50, \$50

## \$500 3' Adult Hunter NAL/WIHS/M&S Classic

**Entry Fee: \$50**

**Prize Money**

905. \$500 NAL/WIHS/M&S Adult Hunter Classic \$150, \$110, \$75, \$50, \$35, \$30, \$25, \$25

## \$500 3' Children's Hunter NAL/WIHS/M&S Classic

**Entry Fee: \$50**

**Prize Money**

900. \$500 NAL/WIHS/M&S Children's Hunter Classic \$150, \$110, \$75, \$50, \$35, \$30, \$25, \$25

## \$250 2'2'6" Children's Pony Hunter Classic

**Entry Fee: \$40**

**Prize Money**

935. \$250 Children's Pony Hunter Classic \$75, \$55, \$37.5, \$25, \$17.5, \$15, \$12.5, \$12.5  
Fences 2' for small/med ponies and 2'6" for large ponies

## \$250 2'2'6" Pre-Children's/Pre-Adult Hunter Classic

**Entry Fee: \$40**

**Prize Money**

930. \$250 Pre Children's/ Pre-Adult Hunter Classic \$75, \$55, \$37.5, \$25, \$17.5, \$15, \$12.5, \$12.5  
Fences 2' for ponies and 2'6" for horses



## Quentin Fall Classic Special Hunter Classes

### **\$1500 USHJA Green Hunter Incentive**

**Entry Fee: \$150 + \$20 USHJA Fee**

**Prize Money: \$1,500**

970. USHJA Green Incentive

The Green Incentive Stake is open to horses of any age that are eligible to compete as a Green hunter under Federation rules. *Horses must be enrolled in the Green Incentive Program prior to competing in a Green Incentive Stake class.*

### **\$5,000 USHJA National Hunter Derby 3'**

**Entry Fee: \$300**

**Prize Money: \$5,000**

950. A two round competition with numerical scoring. The top twelve (12) horses to return for the second round. Twelve Overall Ribbons and a special award to the highest placed junior or amateur rider. Complete specs and judging procedure available in the horse show office or at ushja.org. All riders, trainers and owners must be current members of USEF & USHJA. Horses must be registered with USHJA. Exhibitors must declare their point division on the Declaration Form in the horse show office before the start of the class for any bonus points to be awarded. Fences 3'.

**1st - \$1500.00, 2nd - \$1100.00, 3rd - \$650.00, 4th - \$400.00, 5th - \$300.00, 6th - \$250.00, 7th - \$200.00, 8th - \$150.00, 9th - \$150.00, 10th - \$100.00, 11th - \$100.00, 12th - \$100.00**

### **\$1,000 Swan Lake Horse Shows Hunter Derby 2'6"**

**Entry Fee: \$80**

**Prize Money: \$1,000**

965. A two round competition with numerical scoring. The top twelve (12) horses to return for the second round. Horse/Rider combination must not have shown at this show in any class above 3'. Twelve Overall Ribbons and special award to the highest placed junior or amateur rider.

**\$300.00, \$220.00, \$130.00, \$80.00, \$60.00, \$50.00, \$40.00, \$30.00, \$30.00, \$20.00, \$20.00, \$20.00**

### **\$500 Swan Lake Horse Shows Hunter Derby 2'**

**Entry Fee: \$50**

**Prize Money: \$500**

966. A two round competition with numerical scoring. The top twelve (12) horses to return for the second round. Open to junior/amateur riders. Horse must not have shown at this show in any class above 2'9".

**\$150.00, \$110.00, \$65.00, \$40.00, \$30.00, \$25.00, \$20.00, \$15.00, \$15.00, \$10.00, \$10.00, \$10.00**

# MID-ATLANTIC HORSE

*Covering the Northeast's equine news and issues.*



*For advertising information  
please contact:*

**Bill Dangro at  
(717) 721-4415**

**[bdangro.eph@lnpnews.com](mailto:bdangro.eph@lnpnews.com)**

**OR**

**Wendy Martin at  
(717) 721-4439**

**[wmartin.eph@lnpnews.com](mailto:wmartin.eph@lnpnews.com)**



**PO Box 609 • EPHRATA, PA 17522 • FAX (717) 733-6058**

**[WWW.MID-ATLANTICHORSE.COM](http://WWW.MID-ATLANTICHORSE.COM)**



## Quentin Fall Classic Equitation Specs

		Requirements to fill	Testing	Entry
700.	<b>USEF Talent Search 1*</b>	6 riders must complete course	Flat test	\$60
701.	<b>ASPCA Maclay 3'6"</b>	3 riders must complete course	Top 12 - Flat test	\$45
702.	<b>Dover Saddlery/USEF Medal 3'6"</b>	3 riders must complete course	Top 4 - Flat test	\$45
703.	<b>WIHS Hunter Phase 3'6"</b>	3 riders must complete course	No test	\$45
704.	<b>WIHS Jumper Phase</b>	3 riders must complete course	No test	\$45
706.	<b>1.05 Open Eq Warm-up</b>	No minimum	No test	\$45
710.	<b>MHSA Hunt Seat Medal 3'3"</b>	4 riders must complete course	Top 6 - Flat test	\$45
709.	<b>NCEA 3'3" Junior Medal</b>	No minimum	Top 10 - Flat test	\$45
708.	<b>M&amp;S 3'3" Junior/Amateur Medal</b>	3 riders must complete course	Top 12 - Flat test	\$45
715.	<b>THIS Medal 3'</b>	No minimum	Top 4 - Flat test	\$45
716.	<b>M&amp;S/Josey Mohler 3'</b>	3 riders must complete course	Test in course	\$45
717.	<b>Gittings Horsemanship 3'</b>	6 riders must complete course	Top 4 - Flat test	\$45
727.	<b>MHSA Adult Medal 3'</b>	4 riders must complete course	Top 6 - Flat test	\$45
726.	<b>M&amp;S/CPJHSA Adult Medal 3'</b>	3 riders must complete course	Top 4 - Flat test	\$45
725.	<b>Ariat Adult Medal 3'</b>	No minimum to fill	Top 4 - Flat test	\$45
736.	<b>Marshall and Sterling USEF Pony Medal</b>	3 riders must complete course	Test in course	\$45
737.	<b>WIHS Pony Equitation</b>	3 riders must complete course	No test	\$45
735.	<b>MHSA Hunt seat on ponies</b>	4 riders must complete course	Test in course	\$45
746.	<b>H&amp;H Tack Shop 2'S/M 2'6"L</b>	3 riders must complete course	Test in course	\$45
745.	<b>MHSA Ch Pony Medal 2'S/M 2'6"L</b>	4 riders must complete course	Test in course	\$45
755.	<b>M&amp;S 2'6" Children's Medal</b>	3 riders must complete course	No test	\$45
756.	<b>M&amp;S 2'6" Adult Medal</b>	3 riders must complete course	No test	\$45
758.	<b>2' Pre-Children's Pony Equitation</b>	3 riders must complete course	No test	\$45



## GOLF CART RENTALS

Golf carts available for rental for \$80/day. Please order in advance on stabling form or online entry for guaranteed reservation.

Please provide contact information for person who will be picking it up as well as the dates the golf cart will be needed.



## ***TimeSlice Technologies Corporation***



### ***Show Management Software***

#### ***Features***

**Secure Credit Card Processing & Card Vaulting**

**Fully PCI Compliant**

**Online entries - Free for competitors**

**Online Add/Scratch for competitors!**

**USEF electronic results submissions and  
membership verification!**

**Publish your shows FREE to HorseShowsOnline.com!**

#### ***New***

**Interested in your personal show results history?**

**Upgrade your account to a *Silver* membership today!**

**Research and analysis by horse, owner, trainer, rider**

**View historical results and track your performance.**

**View results at  
HorseShowsOnline.com**

***The Professional's Choice***

***sales@timeslice.ca 905-760-9997***

**HorseShowsOnline.com**



# Quentin Fall Classic Hunter Breeding Classes

## DOUBLE JUDGED - Thursday – Indoor Ring – 2PM Start

Classes will run in Indoor Ring the order listed below  
(Will move to the Indoor Arena if we have inclement weather)

**Entry Fee: \$75 per class**

### YEARLING HORSES

- 1002. PA Bred Yearling Colts and Geldings
- 1003. Thoroughbred and Non Registered Thoroughbred Yearling Colts and Geldings
- 1004. Non Thoroughbred Yearling Colts and Geldings
- 1005. PA Bred Yearling Fillies
- 1006. Thoroughbred and Non Registered Thoroughbred Yearling Fillies
- 1007. Non Thoroughbred Yearling Fillies

### TWO YEAR OLD HORSES

- 1008. PA Bred 2 year old Colts and Geldings
- 1009. Thoroughbred and Non Registered Thoroughbred 2 year old Colts and Geldings
- 1010. Non Thoroughbred 2 year old Colts and Geldings
- 1011. PA Bred 2 year old Fillies
- 1012. Thoroughbred and Non Registered Thoroughbred 2 year old Fillies
- 1013. Non Thoroughbred 2 year old Fillies

### THREE YEAR OLD HORSES

- 1014. PA bred 3 year olds
- 1015. Thoroughbred and Non Registered Thoroughbred 3 year olds
- 1016. Non Thoroughbred 3 year olds

### HORSES FOUR YEARS AND OLDER

- 1017. Mares 4 years and older

### CHAMPIONSHIP CLASSES

(Must have competed in one of the designated classes to be eligible to enter these classes)

- 1018. Best PA Horse Champion and Reserve  
(Classes: 1002, 1005, 1008, 1011, 1014)
- 1019. Best Young Horse and Reserve  
(Classes: 1003, 1004, 1006, 1007, 1009, 1010, 1012, 1013, 1015, 1016)

### AMATEUR/JUNIOR HANDLERS

- 1001. Amateur/Junior Handler *PHSA points only*

### YEARLING PONIES

- 1021. PA Bred Hunter Pony yearling
- 1022. Hunter Pony yearling Colts and Geldings
- 1023. Hunter Pony yearling Fillies

### TWO YEAR OLD PONIES

- 1024. PA Bred Hunter Pony 2 YO
- 1025. Hunter Pony 2 YO Colts and Geldings
- 1026. Hunter Pony 2 YO Fillies

### THREE YEAR OLD PONIES

- 1027. PA Bred Hunter Pony 3 YO
- 1028. Hunter Pony 3 YO

### CHAMPIONSHIP CLASSES

(Must have competed in one of the designated classes to be eligible to enter these classes)

- 1029. PA Bred Hunter Pony Champion and Reserve  
(Classes: 1021, 1024, 1027)
- 1030. Hunter Pony Champion and Reserve  
(Classes: 1022, 1023, 1025, 1026, 1028)

### UNDER SADDLE

- 1031. Young Hunter U/S *PHSA points only*
- 1032. Young Working Hunter U/S *PHSA points only*
- 1033. Young Hunter Pony U/S *PHSA points only*

# Country Folks

# Mane Stream



**Your Connection to the  
Northeast & Mid-Atlantic Region Equine Markets**

**ALL BREEDS • ALL DISCIPLINES • EVERY ISSUE IS ONLINE**

**Mane Stream is published monthly by  
Lee Publications, Inc**

**PO Box 121, Palatine Bridge, NY 13428  
518-673-3237 • 800-218-5586 • Fax 518-673-2381**



**tkrieger@leepub.com  
www.cfmanestream.com**



# Exceptional Insurance Protection Unparalleled Service and Support



© Randi Muster 2008

You expect a lot from your horse. You want performance and response when you ask for it, and agility and grace in the toughest of circumstances. At **Marshall & Sterling Insurance**, we think you should expect the same qualities in your insurance agent.

**Sterling Client Services** was created by insurance professionals to meet the demands of horse owners, whether you are a competing pro, a dedicated amateur, or you just love horses.

We know why you buy insurance.  
**It's our business.**

To learn more, contact:

**Joseph Norick**  
800-836-3046, ext. 270  
[jnorick@marshallsterling.com](mailto:jnorick@marshallsterling.com)

**Margaret Barese**  
800-836-3046, ext. 288  
[mbarese@marshallsterling.com](mailto:mbarese@marshallsterling.com)

[www.marshallsterling.com](http://www.marshallsterling.com)

STERLING CLIENT SERVICES

**Marshall  
& Sterling**  
LEAGUE Founded  
1991

**Marshall  
& Sterling**  
INSURANCE



## Show Jumping Hall of Fame Jumper Classic Series

*The Show Jumping Hall of Fame Jumper Classic Series is designed to give amateur-owner and junior riders an opportunity to compete at higher levels and serves as a proving ground for many riders who aspire to someday represent the United States in international competition.*

*With classes at approximately 100 horse shows across the country, the Series hosts separate junior and amateur-owner divisions in two Conferences—East and West. Series standings are used to help determine junior and amateur-owner entries for the Alltech National Horse Show and the Las Vegas National Horse Show.*

Series winners receive year-end awards, and the Series offers Year-End Championship Finals for junior and amateur-owner riders at the Alltech National Horse Show and the Las Vegas National Horse Show.

---

Any horse show offering a class that meets all the criteria set forth in the Series specifications and has prize money of at least \$1,000 is eligible to be part of the series.

---

The Show Jumping Hall of Fame Jumper Classic Series is sponsored by:



LEGISequine.com



SMARTPAK



For more information, including complete Series specifications, please visit

**[www.ShowJumpingHallofFame.net](http://www.ShowJumpingHallofFame.net)**

### DONATIONS

I would like to support the Show Jumping Hall of Fame.

Enclosed, please find my check for:

\_\_\_\_\_ \$5,000    \_\_\_\_\_ \$2,500    \_\_\_\_\_ \$1,000    \_\_\_\_\_ \$500    \$\_\_\_\_\_ Other

Name \_\_\_\_\_

Address \_\_\_\_\_ City \_\_\_\_\_ State \_\_\_\_\_ Zip \_\_\_\_\_

Phone \_\_\_\_\_ Email \_\_\_\_\_

Please mail check, payable to Show Jumping Hall of Fame, to SHF, c/o Classic Communications, 38 Mechanic Street, Suite 101, Foxboro, MA 02035

*The Show Jumping Hall of Fame and Museum, Inc. is a 501(c)(3) nonprofit organization. All contributions are tax-deductible to the full extent of the law.*



# Quentin Fall Classic Jumper Specs

## 5 Year Old Young Jumper

Open to horses with papers indicating a foaling date five years previous to the current calendar year. Horses competing in classes restricted to Five-Year-Olds may not have ever shown in Open Jumper Classes offering \$25,000 or more in prize money. Height of Fences: To be set at 1.0m to 1.10m.

		Entry Fee	Prize Money
515.	5 Year Old Young Jumper	\$50	
516.	5 Year Old Young Jumper (Qualifier)	\$50	

## 6 Year Old Young Jumper

Open to horses with papers indicating a foaling date six years previous to the current calendar year. Horses competing in classes restricted to Six Year Olds may not have ever shown in Open Jumper Classes offering \$25,000 or more in prize money. Height of Fences: To be set at 1.20m

		Entry Fee	Prize Money
520.	6 Year Old Young Jumper	\$50	
521.	\$500 6 Year Old Young Jumper (Qualifier)	\$55	\$500

## 7 Year Old Young Jumper

Open to horses with papers indicating a foaling date seven or eight years previous to the current calendar year. Horses competing in classes restricted to Seven Year-Olds may not have ever shown in Open Jumper Classes offering \$25,000 or more in prize money at the National or International Standard. Height of Fences: To be set at 1.30m

		Entry Fee	Prize Money
525.	7 Year Old Young Jumper	\$50	
526.	\$500 7 Year Old Young Jumper (Qualifier)	\$55	\$500

## 1.30/1.40m Junior Amateur Owner Jumper (Nominated)

See USEF Rule Book

		Entry Fee	Prize Money
506.	\$1000 1.30m/1.40m Junior Amateur Owner Jumper	\$75	\$1000
507.	\$1000 1.30m/1.40m Junior Amateur Owner Jumper	\$75	\$1000

## 1.20m Junior Amateur Owner Jumper (Nominated)

See USEF Rule Book

		Entry Fee	Prize Money
491.	\$500 1.20m Junior Amateur Owner Jumper	\$55	\$500
492.	\$500 1.20m Junior Amateur Owner Jumper	\$55	\$500

## 1.30m Jumper (Nominated)

		Entry Fee	Prize Money
436.	\$600 1.30m Open Jumper	\$60	\$600
437.	\$600 1.30m Open Jumper	\$60	\$600

## Quentin Fall Classic Jumper Specs

### 1.20m Jumper (Nominated)

		Entry Fee	Prize Money
431.	\$500 1.20m Open Jumper	\$55	\$500
432.	\$500 1.20m Open Jumper	\$55	\$500
433.	\$500 1.20m Open Jumper	\$55	\$500

### 1.15m Jumper

		Entry Fee	
426.	1.15m Open Jumper	\$45	
427.	1.15m Open Jumper	\$45	
428.	1.15m Open Jumper	\$45	
429.	1.15m Open Jumper	\$45	

### 1.10m High Child/Adult Jumper

See Zone 2 Specs: [www.USHJA.org](http://www.USHJA.org)

		Entry Fee	Prize Money
476.	\$250 High Child/Adult Jumper	\$50	\$250
477.	\$250 High Child/Adult Jumper	\$50	\$250

### 1.05m Pony Jumper

		Entry Fee	
530.	1.05m Pony Jumper	\$50	
531.	1.05m Pony Jumper	\$50	

### 1.0m Take2 TB Jumper

		Entry Fee	Prize Money
446.	1.0m Take2 TB Jumper	\$50	
447.	1.0m Take2 TB Jumper	\$50	



WWW.Footingdrag.com

888-369-1444  
Conventional/  
Synthetic Grooming

The unique design of the DragNfly features heavy duty side rub rails. A row of adjustable, aggressive ripper teeth are offset, having a working depth of up to 4 inches. The rear 2 rows of spring tines are off set and can be adjusted by a manual ratchet or an optional hydraulic cylinder. The spring tines give an ultimate mixing effect of the surface. The rear bar roller pulverizes and packs to the desired density, leaving an attractive pattern finish. The DragNfly handles all types of footings. The DragNfly can easily be pulled with small tractor, ATV, UTV, Golfcart ect..

*The DragNfly Starting at only \$2,200.00*



*The MINI DragNfly starting at only \$1,500.00*

Check out our latest model the MINI DragNfly. It has two open cage rollers and three rows of tines! This drag is designed to mix the surface only. This drag cannot dig. It can be pulled behind ATV, golfcart etc, or small compact tractor



The DragNfly PRO renovates and conditions conventional and synthetic footings on horse riding arenas and tracks. Since this groomer handles all types of footings there is no need to buy multiple groomers when you change the footing surface in your arena. DragNfly PRO adds unique features over the DragNfly. The 3 Point Hitch swivels to allow easier turning without throwing out the footing. Coupled with a compact length, this groomer allows tight turns around jumps with a relatively low horsepower requirement.

*DragNfly Pro*

*Optimal double roller Pro only*



# Quentin Fall Classic Jumper Specs

## 1.0m Low Child/Adult Jumper

See Zone 2 Specs: [www.USHJA.org](http://www.USHJA.org)

		Entry Fee	Prize Money
461.	\$150 Low Child/Adult Jumper	\$50	\$150
462.	\$150 Low Child/Adult Jumper	\$50	\$150

## 1.0m Jumper

		Entry Fee
411.	1.0m Jumper	\$45
412.	1.0m Jumper	\$45
413.	1.0m Jumper	\$45
414.	1.0m Jumper	\$45

## 0.90m Jumper

		Entry Fee
406.	0.90m Jumper	\$40
407.	0.90m Jumper	\$40

## 0.80m Jumper

		Entry Fee
401.	0.80m Jumper	\$40
402.	0.80m Jumper	\$40

## 0.70m Jumper

		Entry Fee
511.	0.70m Jumper	\$40
512.	0.70m Jumper	\$40
513.	0.70m Jumper	\$40

## Miscellaneous Jumper Classes

		Entry Fee
421.	1.05m Jumper	\$45
422.	1.10m Jumper	\$45
423.	1.10m Jumper	\$45



The new finer and lighter saddle with horsewomen in mind.

# 2G<sup>®</sup> *Mademoiselle*



Performance with a lighter touch.



The new CWD<sup>®</sup> sport saddle is designed especially for the female morphology. Its lightweight slimline form ensures maximum comfort and precision when working your horse. The **2G<sup>s</sup> Mademoiselle** brings a feminine touch to innovation and performance.

[www.cwdsellier.com](http://www.cwdsellier.com)



CWD USA, 1000 W. Oak St, Burbank, CA, 91506 - Tel. (818) 859-7708 Email. [2gsmademoiselle@cwdsellier.com](mailto:2gsmademoiselle@cwdsellier.com)

## Quentin Fall Classic Special Jumper Classes

### \$25,000 Quentin Fall Classic Grand Prix (regional standard)

		Entry Fee	Prize Money
670.	\$25,000 Quentin Fall Classic Grand Prix	\$500	\$25,000

### \$5,000 Open Jumper Welcome Stake

		Entry Fee:	Prize Money:
650.	\$5,000 Open Jumper Welcome Stake 1.30m	\$250	\$5,000

### \$3,000 Open Speed

		Entry Fee:	Prize Money:
640.	\$3,000 Open Speed 1.30m	\$175	\$3,000

### \$3,500 1.30m/1.40m Show Jumping Hall of Fame Jr/AO Classic

		Entry Fee:	Prize Money:
595.	\$3,500 1.30m/1.40m SJHOF Jr/AO Jumper Classic	\$175	\$3,500

### \$2,500 1.20m NAL Jr/AO Classic

		Entry Fee:	Prize Money:
580.	\$2,500 1.20m NAL Jr/Ao Classic	\$150	\$2,500

### JUMPER PRIZE MONEY BREAKDOWN

<b>\$25,000</b>	1st	\$7500	2nd	\$5500	3rd	\$3250	4th	\$2000	5th	\$1250	6th	\$1250
	7th	\$1000	8th	\$750	9th	\$750	10th	\$500	11th	\$500	12th	\$500
<b>\$5000</b>	1st	\$1500	2nd	\$900	3rd	\$600	4th	\$500	5th	\$450	6th	\$400
	7th	\$350	8th	\$300								
<b>\$3500</b>	1st	\$1100	2nd	\$650	3rd	\$450	4th	\$350	5th	\$300	6th	\$275
	7th	\$200	8th	\$175								
<b>\$2500</b>	1st	\$750	2nd	\$450	3rd	\$300	4th	\$250	5th	\$200	6th	\$200
	7th	\$175	8th	\$175								
<b>\$1000</b>	1st	\$300	2nd	\$220	3rd	\$170	4th	\$130	5th	\$100	6th	\$80
<b>\$500</b>	1st	\$100	2nd	\$90	3rd	\$80	4th	\$80	5th	\$75	6th	\$75
<b>\$250</b>	1st	\$75	2nd	\$55	3rd	\$38	4th	\$32	5th	\$25	6th	\$25
<b>\$150</b>	1st	\$50	2nd	\$30	3rd	\$22	4th	\$18	5th	\$15	6th	\$15
<b>\$125</b>	1st	\$37.50	2nd	\$27.50	3rd	\$19	4th	\$16	5th	\$12.50	6th	\$12.50

## Quentin Fall Classic Special Jumper Classes

To be eligible for the following Classics you must have entered and paid for one other class in the same division. The classics will be awarded bonus points for Champion and Reserve.

### **\$1,500 Hess Equine High Child/Adult Jumper Classic**

		<b>Entry Fee:</b>	<b>Prize Money:</b>
555.	\$1,500 High Child/Adult Jumper Classic 1.10m	\$150	\$1,500

### **\$500 Take2 TB Jumper Classic**

		<b>Entry Fee:</b>	<b>Prize Money:</b>
450.	\$500 Take2 TB Jumper Classic 1.0m	\$50	\$500

### **\$750 Low Child/Adult Jumper Classic**

		<b>Entry Fee:</b>	<b>Prize Money:</b>
610.	\$750 Low Child Adult Jumper Classic 1.0m	\$75	\$750

### **\$200 0.90m Jumper Classic**

		<b>Entry Fee:</b>	<b>Prize Money:</b>
540.	\$250 0.90m Jumper Classic	\$50	\$250

### **\$200 0.80m Jumper Classic**

		<b>Entry Fee:</b>	<b>Prize Money:</b>
535.	\$250 0.80m Jumper Classic	\$50	\$250



Transporting the  
competitive horse world *one flight at a time.*



Photo credit: Gabrielle Sokolow



WEEKLY FLIGHTS TO  
AND FROM EUROPE

.....  
AND THE REST  
OF THE WORLD.

horseflight   
Excellence in International Horse Shipping

237 Old Turnpike Road  
Califon, NJ 07830  
office +1 (844) 832-5848  
fax +1 (866) 467-6704  
[www.horseflight.com](http://www.horseflight.com)

USEF Competition Name: **Quentin Fall Classic**  
Competition Division(s) and Rating(s): **National (A) Hunter 3\* Jumper**

USEF#: **359**

# WAYS TO SAVE AS A US EQUESTRIAN MEMBER



Save 5% on qualifying purchases at checkout

Protect yourself with **discounted** liability and AD&D insurance



Buy 10 bags of feed and get one free!

Save up to **28%** on equipment like Gators<sup>™</sup> and lawnmowers



**JOHN DEERE**



Get started with a **discounted** emergency roadside assistance plan.

## PLUS *MANY* MORE!







## Directions to Swan Lake

### From Frederick on Route 15 traveling North

Take the Route 116 Exit (Hanover St.) - Bear right off exit. Go 4 miles to Bonneville, after curve take immediate right onto Maple Street. Take first left on to White Hall Rd. Go 2.5 miles, see sign on left - Junque Shop, take left onto Honda Road. Make immediate right onto Schoolhouse Road. Swan Lake is 3/4 mile on the left.

### From Harrisburg on Route 15 traveling South

Take the Route 116 Exit (Hanover St.) - Go left off exit. Go 4 miles to Bonneville, after curve take immediate right onto Maple Street. Stay left at fork (Maple becomes White Hall). Go 2.5 miles, see sign on left - Honda Acres, take left onto Honda Road. Make immediate right onto Schoolhouse Road. Swan Lake is 3/4 mile on left.

### From Westminster on Route 97 North

Go past McDonald's in Littlestown. Turn right onto Whitehall Rd. Go 1 mile, turn right onto Littlestown Road. Go past Kosmos Farm, turn left onto Flatbush Road. Swan Lake is 1 mile on right.

### Attention!

If you have a tractor trailer type horse trailer please use these directions to come to Swan Lake from RT 15

Take the PA-116 Hanover Rd exit towards Rock Grove Rd. Travel 6.3 mi. Turn right on to Honda Rd.

Go 1.2 miles and keep Left on Honda Rd. Go half a mile and turn left on Schoolhouse Rd.

Go 0.6 miles to Swan Lake Stables, trailer entrance on the left.





People that would  
do anything for  
their horses deserve  
a tack shop that  
would do anything  
for them...



Do Trot In Tack Shop, LLC.  
2539 York Road  
Jamison PA 18929  
215-343-2822



We have all the latest and greatest  
in tech wear for show and schooling!

Popular brands such as Grand Prix,  
RJ Classics, FITS, Gersemi, Romfh,  
Tailored Sportsman, Horseware and more!

